



Portapinze
Collet chucks
Spannzangenhalter
Mandrins à pinces

SK / WD 30 - 40

ERC Collets

Pag. - Seite

1 ÷ 2



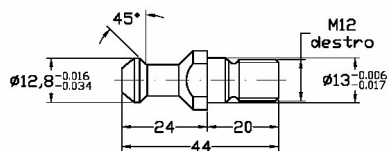
Portapinze
Collet chucks
Spannzangenhalter
Mandrins à pinces

SK / WD 30 - 40

EOC Collets

Pag. - Seite

2



Tiranti
Pull Studs
Anzugsbolzen
Tirettes

Pag. - Seite

3



Portapinze
Collet chucks
Spannzangenhalter
Mandrins à pinces

HSK 63 - Form E - F

ERC Collets

Pag. - Seite

4 ÷ 5



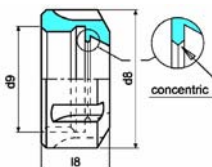
Portapinze
Collet chucks
Spannzangenhalter
Mandrins à pinces

Morse Taper

ERC 32

Pag. - Seite

6



Ghiere chiudipinza con estrazione concentrica
Clamping nuts with concentric ring extractor
Spannmuttern mit Konzenterring
Écroux avec bague d'extraction symétrique

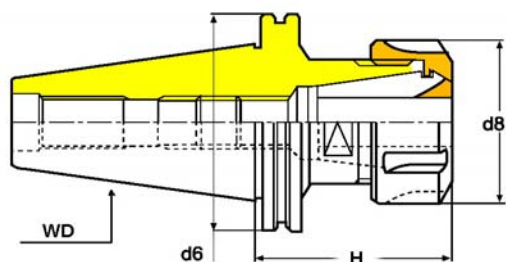
Pag. - Seite

7

Portapinzine
Collet chucks
Spannzangenhalter
Mandrins à pinces

**PROGETTATO PER
LAVORAZIONI AD
ALTA VELOCITÀ**

ERC / DIN 6499 Collets



| Ref. | Order Nr. | d6 | d8 | Capacità Range | Price | Machine Reference |
|--------------------------------------|---------------------|-------|----|-------------------|-------|--|
| SHANKS WD 30 - 40 / DIN 69871 | | | | | | |
| 316-020 | WD30.H50.ERC32RH | 50 | 50 | 3 ÷ 20 | | BIESSE • COSMEC • MASTERWOOD • |
| | WD30.H50.ERC32LH | 50 | 50 | 3 ÷ 20 | | |
| | WD30.H57.ERC40RH | 50 | 63 | 4 ÷ 30 | | |
| | WD30.H57.ERC40LH | 50 | 63 | 4 ÷ 30 | | |
| | WD30.H57.ERC32RH | 50 | 50 | 3 ÷ 20 | | BUSELLATO • SCM • FOM • G. COLOMBO |
| | WD30.H57.ERC32RHY ♦ | 50 | 50 | 3 ÷ 20 | | |
| ♦ Trattamento NYPLOI | | | | | | |
| | WD30.H68.ERC32RH | 50 | 50 | 3 ÷ 20 | | • BIESSE • SCM • • MORBIDELLI • • ELMA • DUBUS • • WEEKE • |
| | WD30.H68.ERC32LH | 50 | 50 | 3 ÷ 20 | | |
| | WD30.H68.ERC40RH | 50 | 63 | 4 ÷ 30 | | |
| | WD30.H68.ERC40LH | 50 | 63 | 4 ÷ 30 | | |
| | WD40.H68.ERC32RH | 63,55 | 50 | 3 ÷ 20 | | • SCM • BULLERI • • IMA • WEEKE • • MAKA • • STEGHERR • • REICHENBAKER • |
| | WD40.H68.ERC32LH | 63,55 | 50 | 3 ÷ 20 | | |
| | WD40.H68.ERC40RH | 63,55 | 63 | 4 ÷ 30 | | |
| | WD40.H68.ERC40LH | 63,55 | 63 | 4 ÷ 30 | | |
| SHANKS WD 30 C - ISO 7388 | | | | | | |
| | WD30C.H60.ERC32RH | 46 | 50 | 3 ÷ 20 | | CMS |
| | WD30C.H60.ERC32LH | 46 | 50 | 3 ÷ 20 | | |
| | WD30C.H65.ERC40RH | 46 | 63 | 4 ÷ 30 | | |
| | WD30C.H65.ERC40LH | 46 | 63 | 4 ÷ 30 | | |

RH = Mandrini con rotazione destra - Chucks with Right Hand revolution
LH = Mandrini con rotazione sinistra - Chucks with Left Hand revolution

CARATTERISTICHE

- I mandrini WD non hanno le tacche di trascinamento sulla flangia a "V", pertanto, la loro simmetria consente lavorazioni ad alte velocità.
- **ATTENZIONE: PER VELOCITÀ SUPERIORI A 15.000 g/min. E' NECESSARIO BILANCIARE IL MANDRINO CON L'UTENSILE MONTATO.**
- Forniti con ghiera concentriche, vedi pag. 16.7

FEATURES:

- The chucks WD are supplied without the milled slots on the "V" flange. The symmetry of the chuck allow high speed operations.
- **WARNING: FOR SPEEDS MORE THAN 15.000 rpm. THE CHUCK MUST BE FINE BALANCED TOGETHER THE CUTTING TOOL**
- Supplied with concentric clamping nuts, see pag. 16.7

Portapinz
Collet chucks
Spannzangenhalter
Mandrins à pinces

**PROGETTATO PER
LAVORAZIONI AD
ALTA VELOCITÀ**

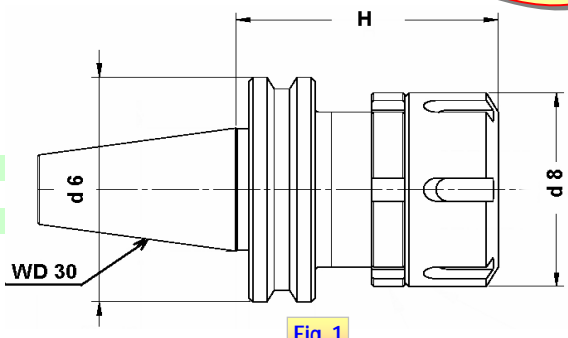


Fig. 1

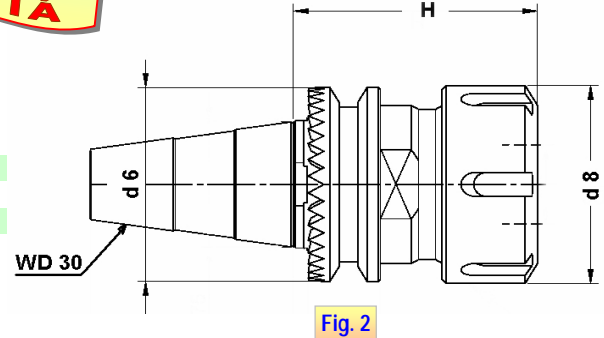


Fig. 2

ERC / DIN 6499 Collets

| Ref. | Order Nr. | Fig. | d6 | d8 | Capacità Range | Price | Machine Reference |
|---------|-------------------|------|----|----|----------------|-------|---|
| 316-023 | WD30U.H63.ERC32RH | 1 | 58 | 50 | 3 ÷ 20 | | <ul style="list-style-type: none"> • UNITEAM • • ESSETEAM • • TEK TEAM • |
| | WD30U.H63.ERC32LH | 1 | 58 | 50 | 3 ÷ 20 | | |
| | WD30U.H65.ERC40RH | 1 | 58 | 63 | 4 ÷ 30 | | |
| | WD30U.H65.ERC40LH | 1 | 58 | 63 | 4 ÷ 30 | | |
| | WD30S.H55.ERC32RH | 2 | 49 | 50 | 3 ÷ 20 | | <ul style="list-style-type: none"> • SCM • • MORBIDELLI • |
| | WD30S.H55.ERC32LH | 2 | 49 | 50 | 3 ÷ 20 | | |
| | WD30S.H74.ERC40RH | 2 | 49 | 63 | 4 ÷ 30 | | |
| | WD30S.H74.ERC40LH | 2 | 49 | 63 | 4 ÷ 30 | | |



Fig. 1



Fig. 2

EOC / DIN 6388 Collets

• GHIERE CHIUDIPINZA SENZA SFERE - COLLET NUTS WITHOUT BALLS

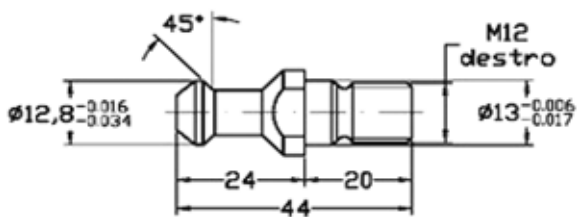
| Ref. | Order Nr. | Fig. | d6 | d8 | Capacità Range | Price | Machine Reference |
|---------|-------------------|------|-------|----|----------------|-------|---|
| 316-023 | WD30.H70.EOC25RH | 1 | 50 | 60 | 2 ÷ 25 | | <ul style="list-style-type: none"> BIESSE • SCM • ELMA • DUBUS • MORBIDELLI • WEEKE |
| | WD30.H70.EOC25LH | 1 | 50 | 60 | 2 ÷ 25 | | |
| | WD40.H74.EOC25RH | 1 | 63,55 | 60 | 2 ÷ 25 | | <ul style="list-style-type: none"> SCM • BULLERI • IMA • WEEKE • MAKA • STECHERR • REICHENBAKER |
| | WD40.H74.EOC25LH | 1 | 63,55 | 60 | 2 ÷ 25 | | |
| | WD30U.H70.EOC25RH | 2 | 58 | 60 | 2 ÷ 25 | | <ul style="list-style-type: none"> UNITEAM • ESSETEAM • TEKTEAM |
| | WD30U.H70.EOC25LH | 2 | 58 | 60 | 2 ÷ 25 | | |
| | WD30S.H70.EOC25RH | 2 | 49 | 60 | 2 ÷ 25 | | <ul style="list-style-type: none"> SCM • MORBIDELLI |
| | WD30S.H70.EOC25LH | 2 | 49 | 60 | 2 ÷ 25 | | |


RH = Mandrini con rotazione destra - Chucks with Right Hand revolution
LH = Mandrini con rotazione sinistra - Chucks with Left Hand revolution

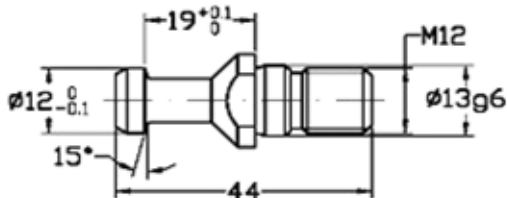
16 Codoli di aggancio (Tiranti)


CAPORALI

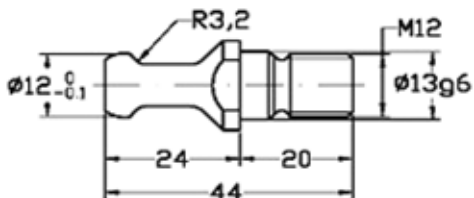
 **TIRANTI - PULL STUDS - ANZUGSBOLZEN - TIRETTES**




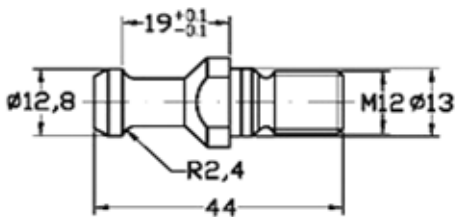
| | | |
|--------------|---|-------|
| Ref. 535-045 | ALBERTI TYPE | |
| Order Nr. |  | Price |
| PS.WD30-ALB | | |




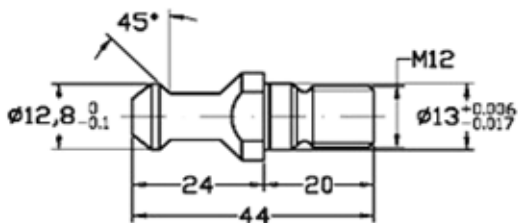
| | | |
|--------------|---|-------|
| Ref. 535-048 | BIESSE TYPE | |
| Order Nr. |  | Price |
| PS.WD30-BS1 | | |




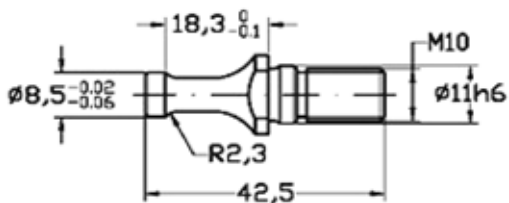
| | | |
|--------------|---|-------|
| Ref. 535-051 | BIESSE TYPE | |
| Order Nr. |  | Price |
| PS.WD30-BS2 | | |




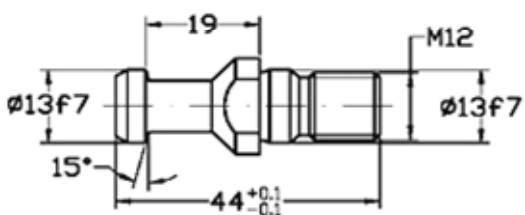
| | | |
|--------------|---|-------|
| Ref. 535-054 | C M S TYPE | |
| Order Nr. |  | Price |
| PS.WD30-CMS | | |




| | | |
|--------------|---|-------|
| Ref. 535-057 | G. COLOMBO TYPE | |
| Order Nr. |  | Price |
| PS.WD30-COL | | |



| | | |
|--------------|---|-------|
| Ref. 535-060 | S C M TYPE | |
| Order Nr. |  | Price |
| PS.WD30-SCM | | |



| | | |
|--------------|---|-------|
| Ref. 500-002 | DIN 69872 | |
| Order Nr. |  | Price |
| PS.DIN30SF | | |



Adatti per macchine per la lavorazione del legno
Suitable for woodworking machine chucks



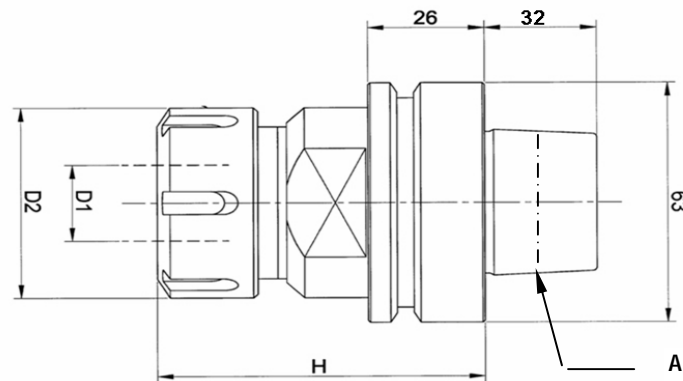
Ordine minimo: 10 pezzi per tipo
Min. order 10 pcs. each type

16 WOOD Machines collet chucks

CAPORALI

Portapinze
Collet chucks
Spannzangenhalter
Mandrins à pinces

**PROGETTATO PER
LAVORAZIONI AD
ALTA VELOCITÀ**



Attacco - Shank: HSK 63 E - DIN 69893 - 5

| Ref. | Order Nr. | A | Pinze Collets | D1 | D2 | Price |
|--|----------------------|----|------------------|--------|----|-------|
| ERC Collets DIN 6499 / B | | | | | | |
| 316-050 | HSK63EWD.H78.ERC32RH | 48 | ERC32 | 2 ÷ 20 | 50 | |
| | HSK63EWD.H78.ERC32LH | 48 | ERC32 | 2 ÷ 20 | 50 | |
| | HSK63EWD.H75.ERC40RH | 48 | ERC40 | 3 ÷ 30 | 63 | |
| | HSK63EWD.H75.ERC40LH | 48 | ERC40 | 3 ÷ 30 | 63 | |
| EOC Collets DIN 6388 - Nuts without balls | | | | | | |
| | HSK63EWD.H80.EOC25RH | 48 | EOC25 | 2 ÷ 25 | 60 | |
| | HSK63EWD.H80.EOC25LH | 48 | EOC25 | 2 ÷ 25 | 60 | |

RH = Mandrini con rotazione destra - Chucks with Right Hand revolution

LH = Mandrini con rotazione sinistra - Chucks with Left Hand revolution



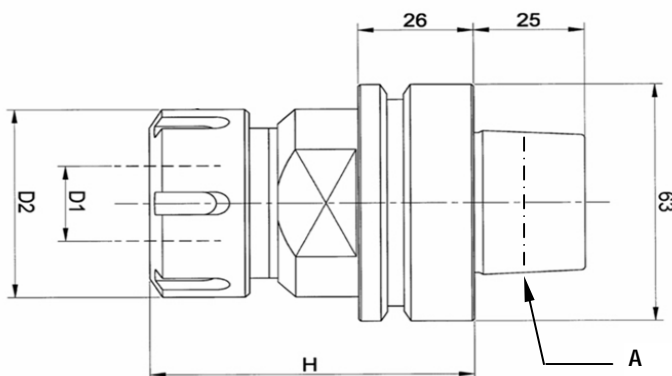
16 WOOD Machines collet chucks

CAPORALI

Portapinze
Collet chucks
Spannzangenhalter
Mandrins à pinces

**PROGETTATO PER
LAVORAZIONI AD
ALTA VELOCITÀ**

Attacco - Shank: HSK 63 F DIN 69893 - 6



| Ref. | Order Nr. | A | Pinze Collets | Foto | D1 | D2 | Price |
|--|-----------------------|----|------------------|------|--------|----|-------|
| ERC Collets DIN 6499 / B | | | | | | | |
| 316-056 | HSK63FWD.H73.ERC32RH | 38 | ERC32 | 1 | 2 + 20 | 50 | |
| | HSK63FWD.H80.ERC40RH | 38 | ERC40 | 1 | 3 + 30 | 63 | |
| | HSK63FWD.H73.ERC32LH | 38 | ERC32 | 1 | 2 + 20 | 50 | |
| | HSK63FWD.H80.ERC40LH | 38 | ERC40 | 1 | 3 + 30 | 63 | |
| ERCD Collets DIN 6499 Compatible | | | | | | | |
| | HSK63FWD.H73.ERCD32RH | 38 | ERCD32 | 2 | 3 + 20 | 50 | |
| | HSK63FWD.H73.ERCD40RH | 38 | ERCD40 | 2 | 4 + 26 | 63 | |
| EOC Collets DIN 6388 - Nuts without balls | | | | | | | |
| | HSK63EWD.H80.EOC25RH | 38 | EOC25 | — | 2 + 25 | 60 | |
| | HSK63EWD.H80.EOC25LH | 38 | EOC25 | — | 2 + 25 | 60 | |

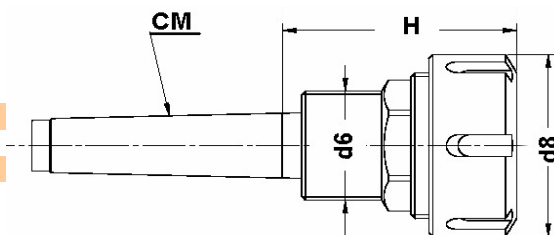
RH = Mandrini con rotazione destra - Chucks with Right Hand revolution
LH = Mandrini con rotazione sinistra - Chucks with Left Hand revolution

16 WOOD Machines collet chucks

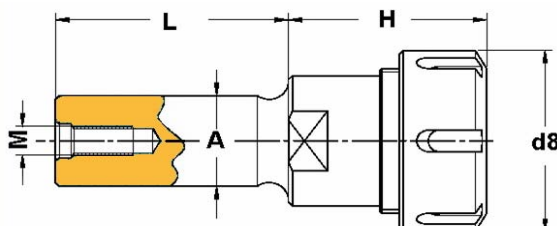
CAPORALI

Portapinze
Collet chucks
Spannzangenhalter
Mandrins à pinces

**PROGETTATO PER
LAVORAZIONI AD
ALTA VELOCITÀ**



| Ref. | Order Nr. | d6 | d8 | Capacità Range | Price |
|-------------------------------|------------------|------------|----|----------------|-------|
| ERC / DIN 6499 Collets | | | | | |
| 316-070 | WCM2.H62.ERC32RH | M 30 x 1,5 | 50 | 3 ÷ 20 | |
| | WCM2.H62.ERC32LH | M 30 x 1,5 | 50 | 3÷ 20 | |



| Ref. | Order Nr. | H | d8 | M | Capacità Range | Price |
|-------------------------------|------------------|----|----|----|----------------|-------|
| ERC / DIN 6499 Collets | | | | | | |
| 316-073 | D20W.L60.ERC32RH | 50 | 50 | M8 | 3 ÷ 20 | |
| | D20W.L60.ERC32LH | 50 | 50 | M8 | 3 ÷ 20 | |
| | D20W.L60.ERC40RH | 64 | 63 | M8 | 4 ÷ 30 | |
| | D20W.L60.ERC40LH | 64 | 63 | M8 | 4 ÷ 30 | |
| | D25W.L60.ERC32RH | 50 | 50 | M8 | 3 ÷ 20 | |
| | D25W.L60.ERC32LH | 50 | 50 | M8 | 3 ÷ 20 | |
| | D25W.L60.ERC40RH | 64 | 63 | M8 | 4 ÷ 30 | |
| | D25W.L60.ERC40LH | 64 | 63 | M8 | 4 ÷ 30 | |

RH = Mandrini con rotazione destra - Chucks with Right Hand revolution
LH = Mandrini con rotazione sinistra - Chucks with Left Hand revolution

16 CONCENTRIC Clamping Nuts



CAPORALI

Ghiere chiudipinza, per alte velocità, con estrazione concentrica
Clamping nuts with concentric ring extractor for high speeds
 Spannmuttern mit Konzenterring für erhöhte Drehzahlen
Ecroux avec bague d'extraction symétrique pour haute vitesse

**PREBALANCED
 GRADE G 6,3**

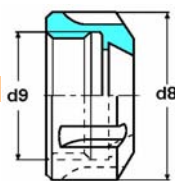


Fig. 1

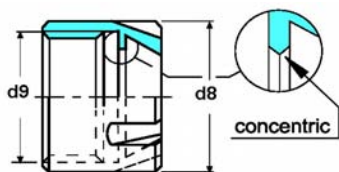


Fig. 2

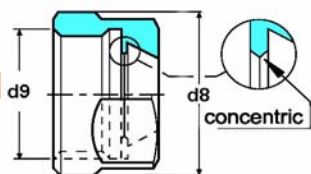


Fig. 3

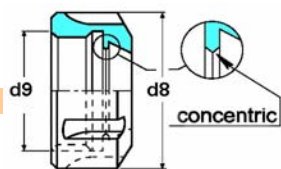


Fig. 4

| Ref. | Order | Fig. | d8 | d9 | max rpm | Price |
|--|----------|------|----|---------------|---------|-------|
| SUPER VERSION - Sliding bearing | | | | | | |
| 130-021 | G25 SPC | 1 | 42 | M32 x 1,5 | 20.000 | |
| | G32 SPC | 1 | 50 | M40 x 1,5 | 20.000 | |
| MINI VERSION Filettatura destra RH thread | | | | | | |
| 130-033 | G16 WDM | 2 | 22 | M19 x 1 | 20.000 | |
| | G20 WDM | 2 | 28 | M24 x 1 | 15.000 | |
| | G25 WDM | 2 | 35 | M30 x 1 | 15.000 | |
| MINI VERSION Filettatura sinistra LH thread | | | | | | |
| 130-034 | G16 WDML | 2 | 22 | M19 x 1 sin | 20.000 | |
| | G20 WDML | 2 | 28 | M24 x 1 sin | 15.000 | |
| | G25 WDML | 2 | 35 | M30 x 1 sin | 15.000 | |
| EXAGONAL VERSION | | | | | | |
| 130-043 | G16 WDE | 3 | 28 | M22 x 1,5 | 15.000 | |
| | G20 WDE | 3 | 34 | M25 x 1,5 | 15.000 | |
| STANDARD VERSION Filettatura destra RH thread | | | | | | |
| 130-053 | G20 WD | 4 | 35 | M25 x 1,5 | 15.000 | |
| | G25 WD | 4 | 42 | M32 x 1,5 | 15.000 | |
| | G32 WD | 4 | 50 | M40 x 1,5 | 15.000 | |
| | G40 WD | 4 | 63 | M50 x 1,5 | 12.000 | |
| STANDARD VERSION Filettatura sinistra LH thread | | | | | | |
| 130-054 | G20 WDL | 4 | 35 | M25 x 1,5 sin | 15.000 | |
| | G25 WDL | 4 | 42 | M32 x 1,5 sin | 15.000 | |
| | G32 WDL | 4 | 50 | M40 x 1,5 sin | 15.000 | |
| | G40 WDL | 4 | 63 | M50 x 1,5 sin | 12.000 | |

Chiavi
 Spanners
 Spansschüssel
 Clés



SUPER - STANDARD
 See - pag. 1.35



MINI
 See - pag. 1.33



EXAGON
 See - pag. 1.34



Sono fornite di serie con i portapinze per la lavorazione del legno
 Are supplied with the collet chucks for woodworking machines