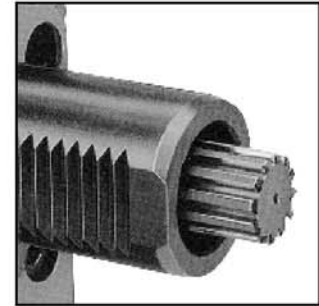
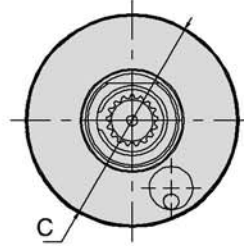
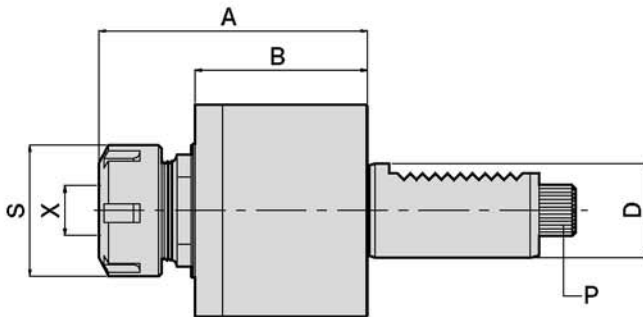


### 軸向鑽銑刀座



- To be used for collet DIN 6499
- External coolant supply
- Collet is not included.

Power Transmission According To DIN 5482

#### DIMENSIONS

D DIN 69880	X Capacity	S	Maximum R.P.M.	i	A	B	C	P DIN 5482	Order No.
30	1-16 ER25	42	6000	1:1	101	70	68	B15X12	DA30548225
40	2-20 ER32	50	6000	1:1	110	74	86	B17X14	DA40548232
50	3-26 ER40	63	6000	1:1	121	81.5	96	B20X17	DA50548240
60	10-34 ER50	78	6000	1:1	140	88.5	116	B25X22	DA60548250

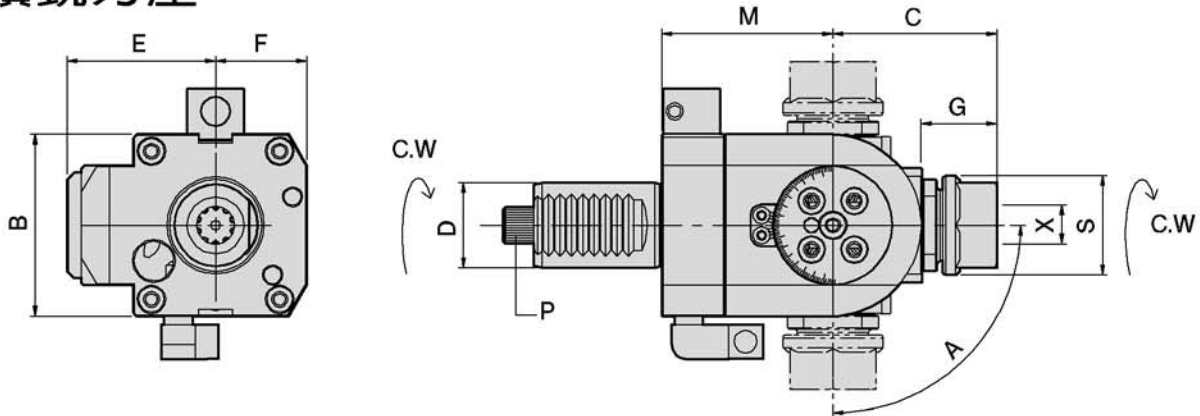
## AXIAL TAPPING HEADS

### 軸向彈性攻牙刀座

#### DIMENSIONS

D DIN 69880	X Capacity	S	Maximum R.P.M.	i	A	B	C	P DIN 5482	Order No.
30	1-10 ER16	30	3000	1:1	103	70	68	B15X12	TDA30548216
40	1-13 ER20	35	3000	1:1	104	74	86	B17X14	TDA40548220
50	1-16 ER25	42	3000	1:1	121	81.5	96	B20X17	TDA50548225
60	2-20 ER32	50	3000	1:1	147	88.5	116	B25X22	TDA60548232

### 萬向鑽銑刀座



Other shank dimensions under development

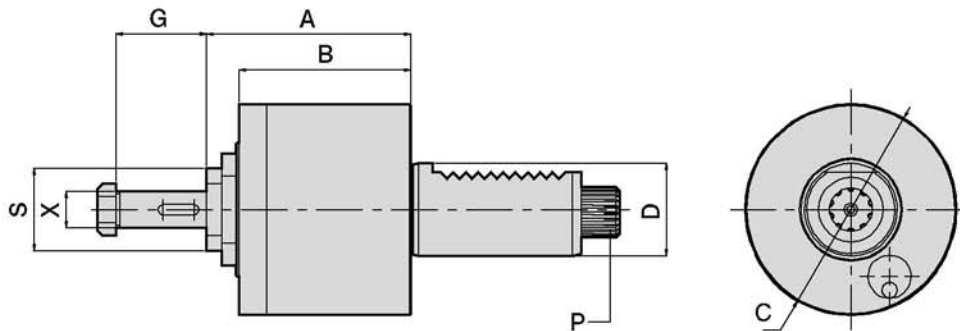
- To be used for collet DIN 6499
- External coolant supply
- Collet is not included.

#### DIMENSIONS

D DIN 69880	X Capacity	S	Maximum R.P.M.	A	B	C	E	F	G	M	P DIN 5480	Order No.
30	1-13 ER20	35	4000	±90°	64	59	54	32	27	67	B15X12	DA30548220B
40	1-16 ER25	42	4000	±90°	76	65	65	38	29	70	B17X14	DA30548225B

### AXIAL DRILLING AND MILLING HEADS

### 軸向鑽銑刀座



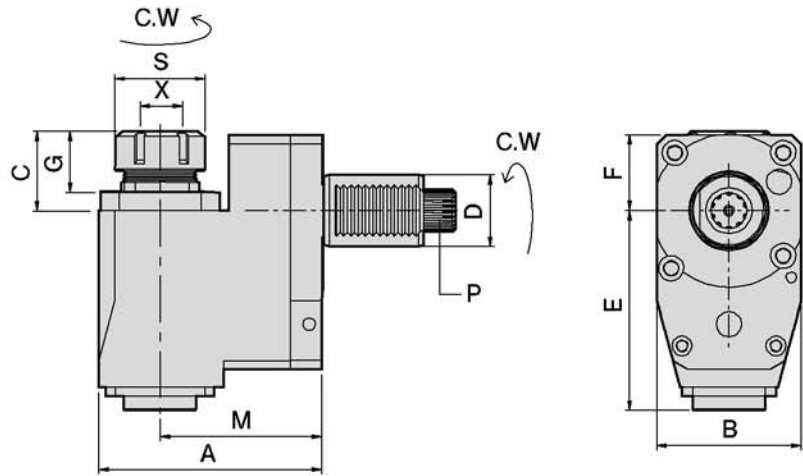
- To be used for cutter arbor according to DIN 6358
- External coolant and intermediate rings supply.

#### DIMENSIONS

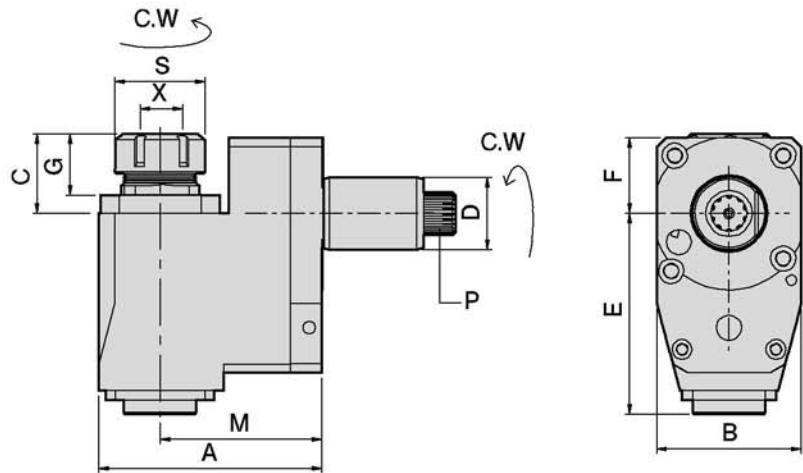
D DIN 69880	X DIN 6358	S	Maximum R.P.M.	A	B	C	G	P DIN 5482	Order No.
30	16	32	3000	91.5	70	68	27	B15X12	DA30548216C
40	16	32	3000	68.5	55	86	27	B17X14	DA40548216C
40	22	32	3000	68.5	55	86	31	B17X14	DA40548222C
50	22	40	3000	117	81.5	96	31	B20X17	DA50548222C
50	27	40	3000	117	88.5	96	33	B20X17	DA50548227C

### 徑向鑽銑刀座-後縮型

**MODE: BL**  
LEFT-HAND



**MODE: BR**  
RIGHT-HAND



- To be used for collet DIN 6499
- External coolant supply
- Collet is not included.

### DIMENSIONS

D DIN 69880	X Capacity	S	Maximum R.P.M.	i	A	B	C	E	F	G	M	P DIN 5482	Order No.
30	1-16 ER25	42	5000	1:1	95	60	42	75.5	31.5	28.5	69	B15X12	BR3054822569 BL3054822569
40	2-20 ER32	50	5000	1:1	124	80	44	110	42	34	90	B17X14	BR4054823290 BL4054823290
50	3-26 ER40	63	5000	1:1	129	86	49	112	45	39	90	B20X17	BR5054824090 BL5054824090
60	10-34 ER50	78	5000	1:1	147	104	83	118	54	42	102	B25X22	BR60548250102 BL60548250102

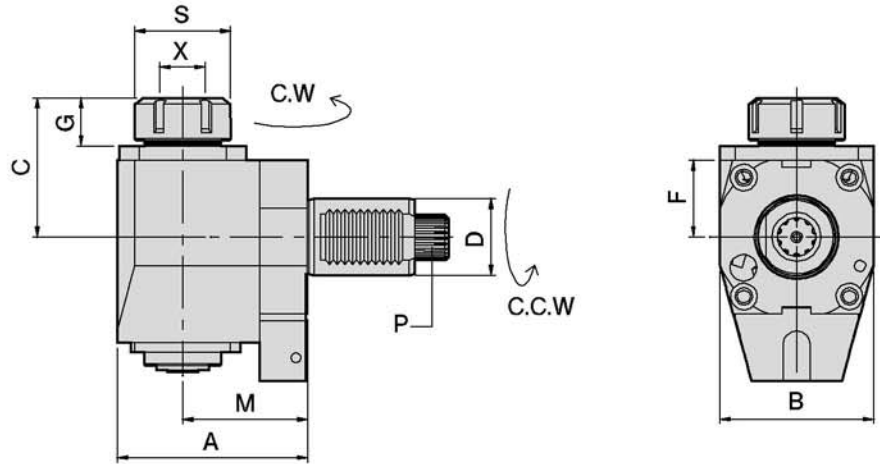
### RADIAL TAPPING HEADS 徑向彈性攻牙刀座-後縮型

### DIMENSIONS

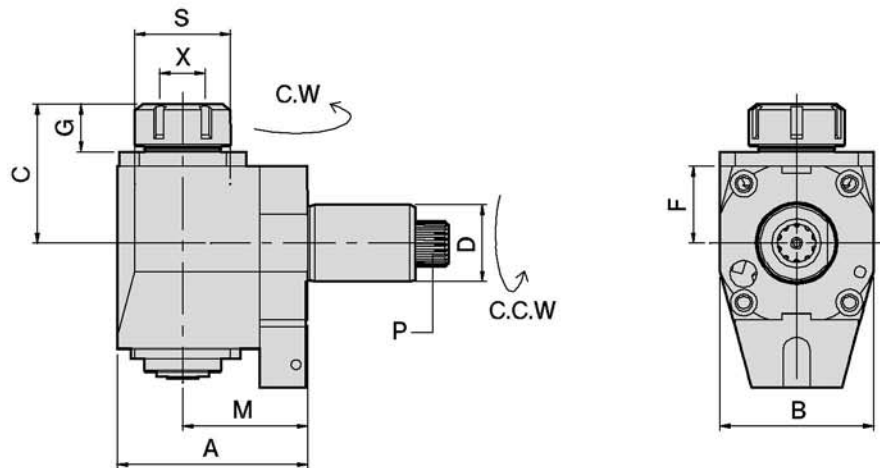
D DIN 69880	X Capacity	S	Maximum R.P.M.	i	A	B	C	E	F	G	M	P DIN 5482	Order No.
30	1-10 ER16	30	3000	1:1	95	60	44	75.5	31.5	32	69	B15X12	TBR3054821669 TBL3054821669
40	1-13 ER20	35	3000	1:1	124	80	50	110	42	34	90	B17X14	TBR4054822090 TBL4054822090
50	2-16 ER25	42	3000	1:1	129	86	54	112	45	36	90	B20X17	TBR5054822590 TBL5054822590
60	2-20 ER32	50	3000	1:1	147	104	87	118	54	40	102	B25X22	TBR60548232102 TBL60548232102

### 徑向鑽銑刀座

**MODE: FL**  
LEFT-HAND



**MODE: FR**  
RIGHT-HAND



- To be used for collet DIN 6499
- External coolant supply
- Collet is not included.

### DIMENSIONS

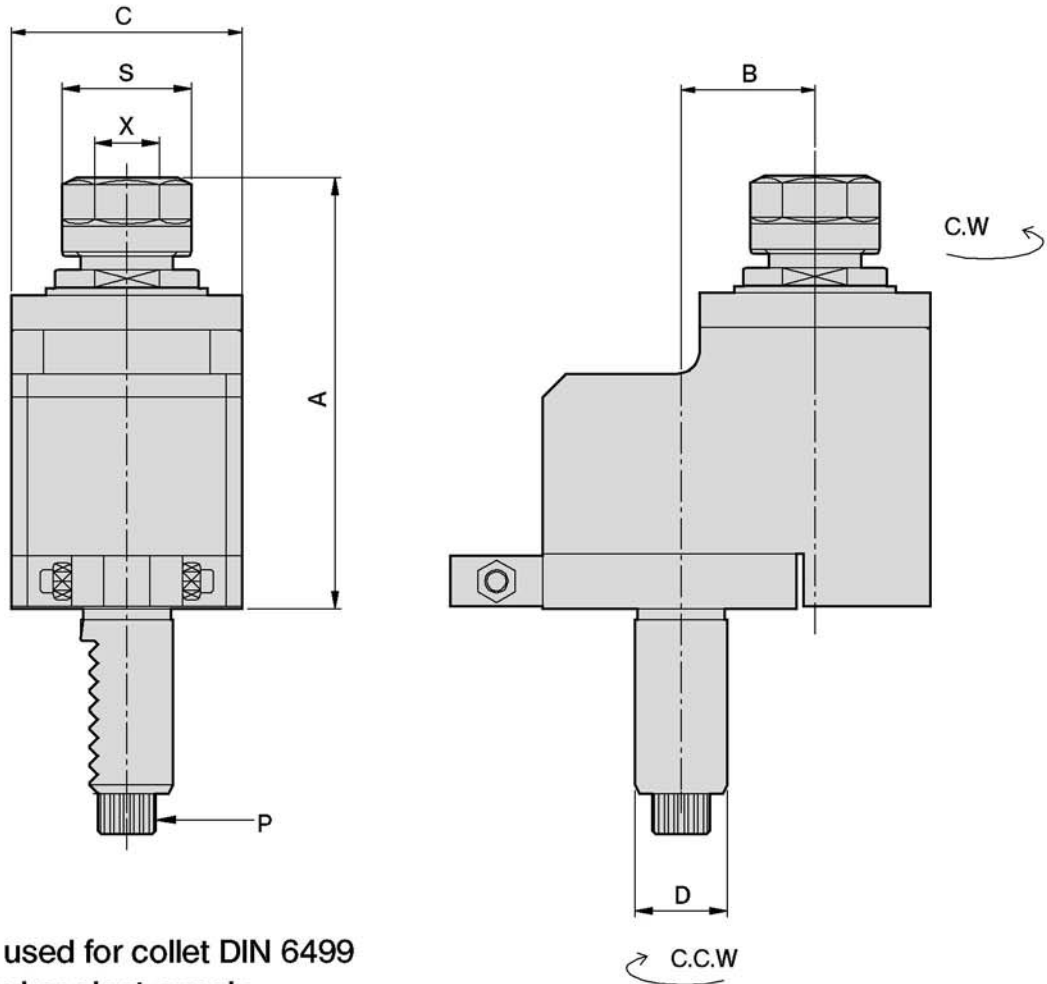
D DIN 69880	X Capacity	S	Maximum R.P.M.	i	A	B	C	F	G	M	P DIN 5482	Order No.
30	1-16 ER25	42	5000	1:1	97	64	74.5	41	26	65	B15X12	FR3054822565 FL3054822565
30	1-16 ER25	42	5000	1:1	117	64	74.5	41	26	85	B15X12	FR3054822585 FL3054822585
40	2-20 ER32	50	5000	1:1	99	80	71	40	23	65	B17X14	FR4054823265 FL4054823265
40	2-20 ER32	50	5000	1:1	119	80	71	40	23	85	B17X14	FR4054823285 FL4054823285
50	3-26 ER40	63	5000	1:1	115	88	103	56	40	75	B20X17	FR5054824075 FL5054824075

### RADIAL TAPPING HEADS 徑向彈性攻牙刀座

### DIMENSIONS

D DIN 69880	X Capacity	S	Maximum R.P.M.	i	A	B	C	F	G	M	P DIN 5482	Order No.
30	1-10 ER16	30	3000	1:1	97	64	75	41	30	65	B15X12	TFR3054821665 TFL3054821665
30	1-10 ER16	30	3000	1:1	117	64	75	41	30	85	B15X12	TFR3054821685 TFL3054821685
40	1-13 ER20	35	3000	1:1	99	80	70	40	25	65	B17X14	TFR4054822065 TFL4054822065
40	1-13 ER20	35	3000	1:1	119	80	70	40	25	85	B17X14	TFR4054822085 TFL4054822085
50	1-16 ER25	42	3000	1:1	115	88	103	56	42	75	B20X17	TFR5054822575 TFL5054822575

### 軸向偏心鑽銑刀座



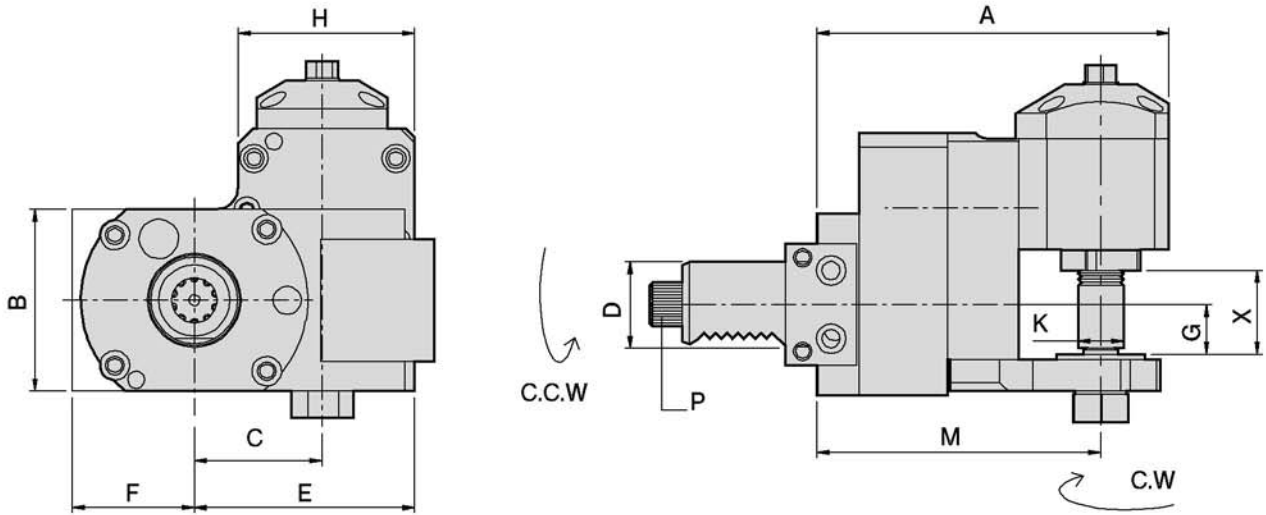
- To be used for collet DIN 6499
- External coolant supply
- Collet is not included.

### DIMENSIONS

D DIN 69880	X Capacity	S	Maximum R.P.M.	i	A	B	C	P DIN 5482	Order No.
30	1-16 ER25	42	4000	1:1	100	29	60	B15X12	DA3054822529
※ 30	1-16 ER25	42	8000	1:2	100	29	60	B15X12	DA3054822529/1
40	2-20 ER32	50	4000	1:1	113	50	80	B17X14	DA4054823250
50	3-26 ER40	63	3000	1:1	124	65	86	B20X17	DA5054824065
60	10-34 ER50	78	3000	1:1	168	65	104	B25X22	DA6054825065
60	10-34 ER50	78	3000	1:1	173.5	80	104	B25X22	DA6054825080

※ 2倍增速

### 徑向側銑刀座



- External coolant supply

#### DIMENSIONS

D DIN 69880	X Capacity	Maximum R.P.M.	i	A	B	C	E	F	G	H	K	M	P DIN 5482	Order No.
30	29	3000	3:1	124	64	45	77.5	34	18	62	16	100	B15X12	BR30548216C/3 BL30548216C/3
40	30.5	3000	3:1	127	70	45	77.5	34	18	62	16	103	B17X14	BR40548216C/3 BL40548216C/3

※ i=3倍減速

Other shank dimensions under development