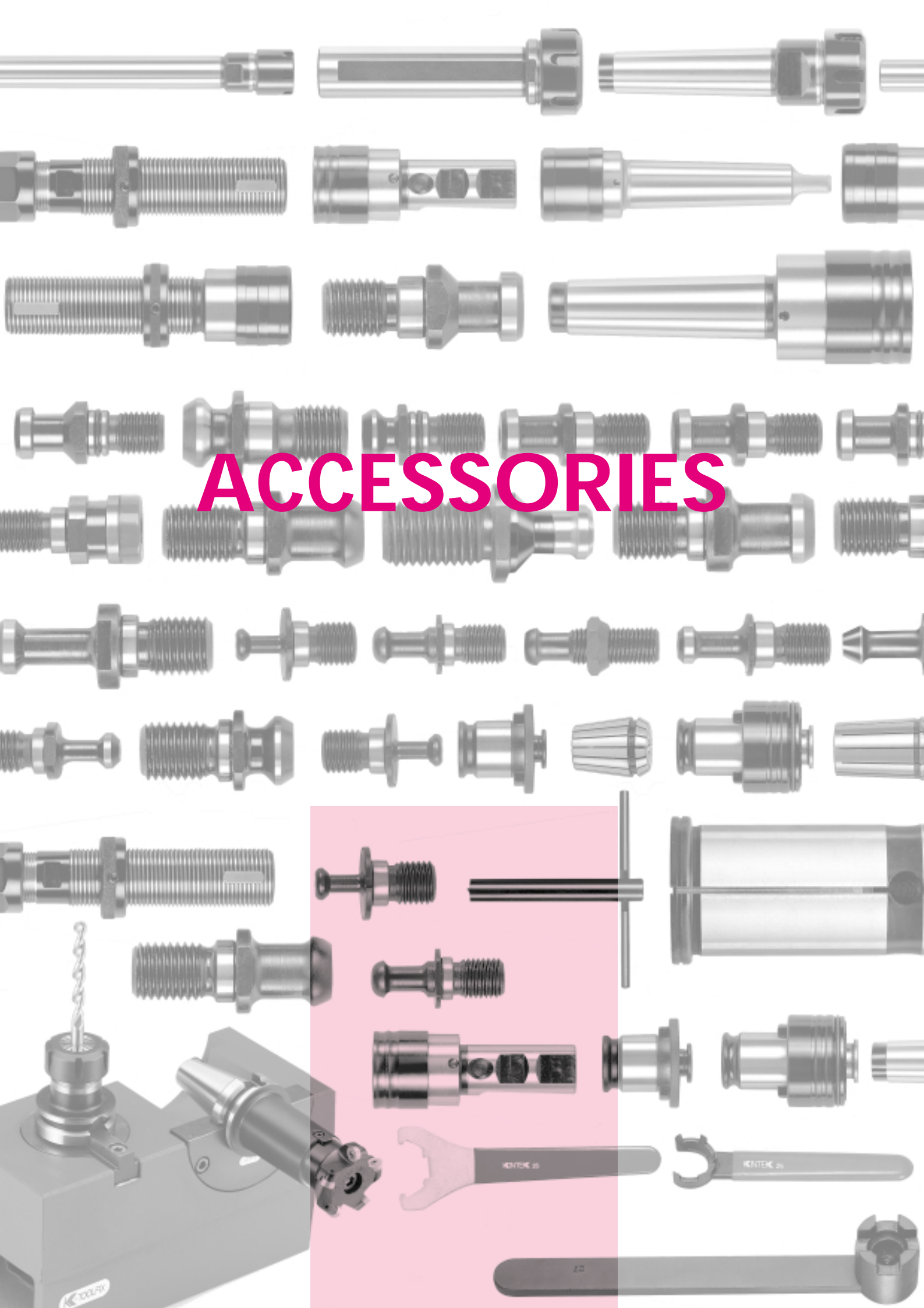
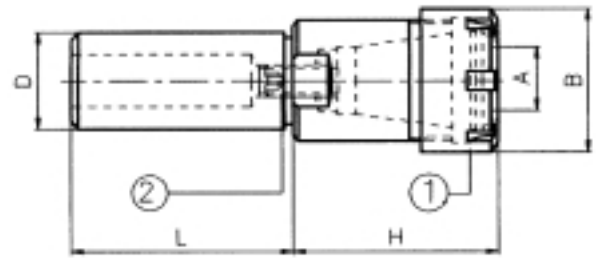


ACCESSORIES





**SPANNFUTTER MIT ZYLINDERSCHAFT FÜR MINI SPANNMUTTER
CYLINDRICAL COLLET CHUCKS WITH MINI NUT
PORTE PINCES QUEUE CYLINDRIQUE AVEC EGROU MINI
PORTAPINZA GAMBO CILINDRICO CON GHIERA MINI**

DIN 6499



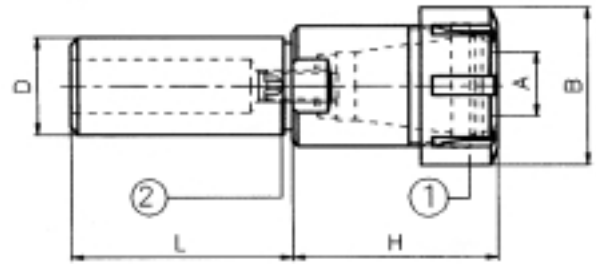
Code N.	Description	D	L	H	B	Clamping capacity	Type
214-35101	D6 L45 ER8M	6	45	24	12	0,5~5	ER8M
214-35139	D6 L45 ER11M	6	45	25	16	0,5~7	ER11M
214-35102	D8 L55 ER8M	8	55	24	12	0,5~5	ER8M
214-35108	D8 L80 ER8M	8	80	24	12	0,5~5	ER8M
214-35109	D8 L55 ER11M	8	55	25	16	0,5~7	ER11M
214-35110	D10 L55 ER11M	10	55	25	16	0,5~7	ER11M
214-35113	D10 L60 ER16M	10	60	37	22	0,5~10	ER16M
214-35140	D12 L100 ER8M	12	100	15	12	0,5~5	ER8M
214-35141	D12 L70 ER11M	12	70	25	16	0,5~7	ER11M
214-35142	D12 L100 ER11M	12	100	25	16	0,5~7	ER11M
214-35143	D12 L140 ER11M	12	140	25	16	0,5~7	ER11M
214-35114	D12 L80 ER16M	12	80	37	22	0,5~10	ER16M
214-35115	D16 L80 ER16M	16	80	37	22	0,5~10	ER16M
214-35145	D16 L100 ER16M	16	100	37	22	0,5~10	ER16M
214-35146	D16 L125 ER16M	16	125	37	22	0,5~10	ER16M
214-35147	D16 L160 ER16M	16	160	37	22	0,5~10	ER16M
214-35148	D16 L100 ER20M	16	100	38	28	0,5~13	ER20M
214-35149	D20 L60 ER16M	20	60	30	22	0,5~10	ER16M
214-35150	D20 L100 ER16M	20	100	30	22	0,5~10	ER16M
214-35151	D20 L160 ER16M	20	160	30	22	0,5~10	ER16M
214-35152	D20 L60 ER20M	20	60	37	28	0,5~13	ER20M
214-35111	D20 L100 ER20M	20	100	37	28	0,5~13	ER20M
214-35153	D20 L120 ER20M	20	120	37	28	0,5~13	ER20M
214-35154	D20 L160 ER20M	20	160	37	28	0,5~13	ER20M
214-35155	D20 L60 ER25M	20	60	46	35	0,5~16	ER25M
214-35116	D20 L100 ER25M	20	100	46	35	0,5~16	ER25M
214-35156	D20 L130 ER25M	20	130	46	35	0,5~16	ER25M
214-35157	D25 L100 ER16M	25	100	27	22	0,5~10	ER16M
214-35158	D25 L60 ER20M	25	60	28	28	0,5~13	ER20M
214-35159	D25 L100 ER20M	25	100	28	28	0,5~13	ER20M
214-35160	D25 L160 ER20M	25	160	28	28	0,5~13	ER20M
214-35161	D25 L70 ER25M	25	70	32	35	0,5~16	ER25M
214-35162	D25 L120 ER25M	25	120	32	35	0,5~16	ER25M
214-35163	D32 L90 ER20M	32	90	28	28	0,5~13	ER20M

Ersatzteile / Parts / Pièces détachées / Componenti

ER	Nut	Stop screw
		
8M	812-203011	-
11M	812-203012	-
16M	812-203013	811-104015
20M	812-203014	811-303013
25M	812-203015	811-303001

**SPANNFUTTER MIT ZYLINDERSCHAFT FÜR STANDARD SPANNMUTTER
CYLINDRICAL COLLET CHUCKS WITH STANDARD NUT
PORTE PINCES QUEUE CYLINDRIQUE AVEC EGROU STANDARD
PORTAPINZA GAMBO CILINDRICO CON GHIERA STANDARD**

DIN 6499



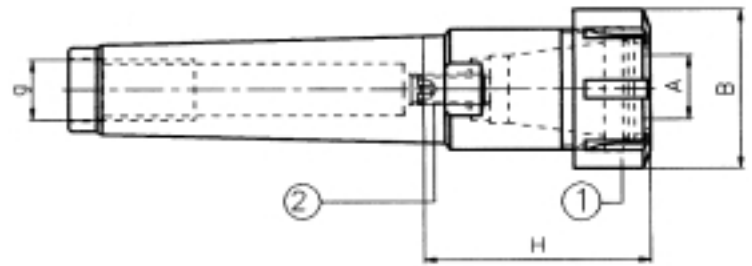
Code N.	Description	D	L	H	B	Clamping capacity	Type
214-35144	D16 L60 ER16	16	60	36	32	0,5~10	ER16
214-35126	D16 L100 ER16	16	100	36	32	0,5~10	ER16
214-35127	D20 L100 ER16	20	100	31	32	0,5~10	ER16
214-35119	D20 L50 ER25	20	50	46	42	0,5~16	ER25
214-35128	D20 L100 ER25	20	100	46	42	0,5~16	ER25
214-35129	D20 L100 ER32	20	100	54	50	2~20	ER32
214-35120	D25 L50 ER25	25	50	32	42	0,5~16	ER25
214-35130	D25 L100 ER25	25	100	32	42	0,5~16	ER25
214-35131	D25 L100 ER32	25	100	54	50	2~20	ER32
214-35132	D32 L70 ER25	32	70	28	42	0,5~16	ER25
214-35117	D32 L70 ER32	32	70	38	50	2~20	ER32
214-35133	D32 L120 ER32	32	120	38	50	2~20	ER32
214-35134	D32 L150 ER32	32	150	38	50	2~20	ER32
214-35135	D40 L120 ER25	40	120	42	42	0,5~16	ER25
214-35136	D40 L70 ER32	40	70	30	50	2~20	ER32
214-35137	D40 L130 ER32	40	130	30	50	2~20	ER32
214-35138	D40 L80 ER40	40	80	60	63	3~30	ER40

Ersatzteile / Parts / Pieces detachees / Componenti

ER	Nut	Stop screw
16	812-203005	811-104015
25	812-203001	811-303001
32	812-203002	811-303001
40	812-203003	811-303014


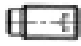
SPANNZANGENAUFNAHME MIT MORSEKEGEL
 COLLET CHUCKS WITH MORSE TAPER
 PORTE-OUTIL POUR SERRAGE PAR PINGE MK
 PORTAPINZA CON ATTACCO CONO MORSE

DIN 6499



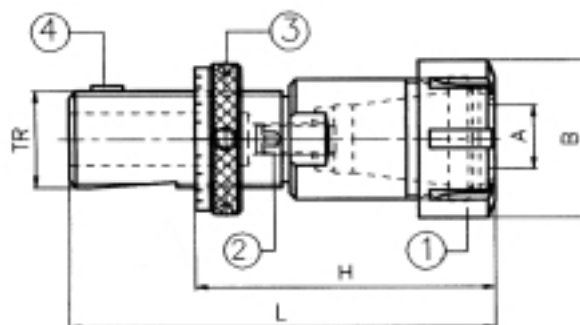
Code N.	Description	MK Morse	H	g	B	Clamping capacity	Type
214-33102	CM1 H40 ER16	1	40	M6	32	0,5~10	ER16
214-33103	CM2 H42 ER16	2	42	M10	32	0,5~10	ER16
214-33104	CM2 H50 ER20	2	50	M10	35	0,5~13	ER20
214-33106	CM3 H53 ER25	3	53	M12	42	0,5~16	ER25
214-33107	CM3 H70 ER32	3	70	M12	50	2~20	ER32
214-33109	CM4 H60 ER32	4	60	M16	50	2~20	ER32
214-33110	CM4 H81 ER40	4	81	M16	63	3~30	ER40

Ersatzteile / Parts / Pieces detachees / Componenti

ER	Nut	Stop screw
		
16	812-203005	811-104015
20	812-203006	811-104015
25	812-303001	811-303001
32	812-203002	811-303001
40	812-203003	811-303014

SPANNZANGENFUTTER DIN 6327
 COLLET CHUCK DIN 6327
 MANDRIN A PINCES DIN 6327
 PORTAPINZE ATTACCO DIN 6327

DIN 6499

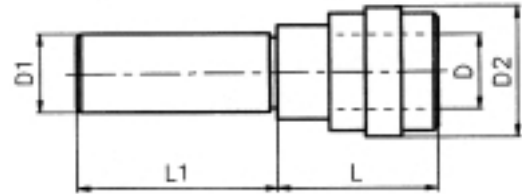


Code N.	Description	Tr	H min.	L	B	Clamping capacity	Type
214-34302	TR16X1,5 L122 ER16	16x1,5	46	122	28	0,5-10	ER16
214-34303	TR20X2 L128 ER16	20x2	55	128	28	0,5-10	ER16
214-34304	TR20X2 L135 ER20	20x2	62	135	34	0,5-13	ER20
214-34306	TR28X2 L140 ER20	28x2	61	140	34	0,5-13	ER20
214-34307	TR28X2 L140 ER25	28x2	61	140	42	0,5-16	ER25
214-34308	TR28X2 L147 ER32	28x2	68	147	50	2-20	ER32
214-34310	TR36X2 L165 ER32	36x2	65	165	50	2-20	ER32
214-34311	TR36X2 L186 ER40	36x2	86	186	63	3-30	ER40

Ersatzteile / Parts / Pieces detachees / Componenti

ER/TR	Nut	Stop screw	Stop nut	Key
16/TR16	812-203005	811-104015	812-204030	814-201080
16/TR20	812-203005	811-104015	812-204040	814-201250
20/TR20	812-203006	811-104015	812-204040	814-201250
20/TR28	812-203006	811-303001	812-204010	814-201140
25/TR28	812-203001	811-303001	812-204010	814-201140
32/TR28	812-203002	811-303001	812-204010	814-201140
32/TR36	812-203002	811-303001	812-204020	814-201160
40/TR36	812-203003	811-303001	812-204020	814-201160

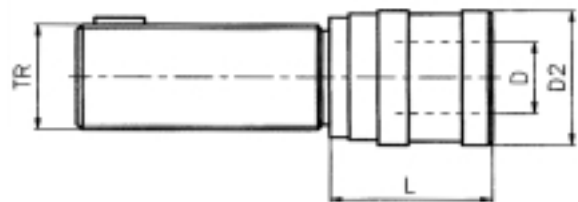
GEWINDESCHNEID SCHNELLWECHSEL FUTTER MIT ZYLINDERSCHAFT
CYLINDRICAL TAP CHUCKS
TARAUEUSES ATTACHEMENT QUEUE CYLINDRIQUE
MASCHIATORE ATTACCO GODOLO GILINDRICO



Code N.	Description	D1	Size.	Top range	d	D2	L	L1	Comp	Ext
M401020	M3-M12 CIL.D20 GR1	20	1	M3~M12	19	38	41	50	9	9
M401025	M3-M12 CIL.D25 GR1	25	1	M3~M12	19	38	41	56	9	9
M401032	M3-M12 CIL.D32 GR1	32	1	M3~M12	19	38	41	61	9	9
M401040	M3-M12 CIL.D40 GR1	40	1	M3~M12	19	38	41	72	9	9
M402020	M6-M20 CIL.D20 GR2	20	2	M6~M20	31	53	63	50	15	15
M402025	M6-M20 CIL.D25 GR2	25	2	M6~M20	31	53	63	56	15	15
M402032	M6-M20 CIL.D32 GR2	32	2	M6~M20	31	53	63	61	15	15
M402040	M6-M20 CIL.D40 GR2	40	2	M6~M20	31	53	63	72	15	15
M403032	M14-M33 CIL.D32 GR3	32	3	M14~M33	48	79	97	61	24	24
M403040	M14-M33 CIL.D40 GR3	40	3	M14~M33	48	79	97	72	24	24

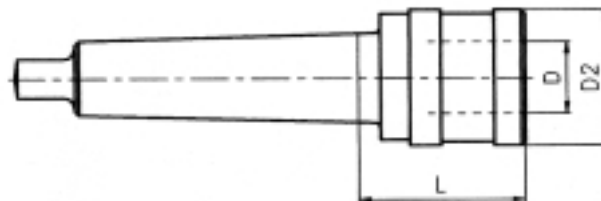
DIN 6327

GEWINDESCHNEID SCHNELLWECHSEL FUTTER MIT GEWINDESCHAFT
QUICK CHANGE TAP HOLDERS WITH AUTOMOTIVE SHANK
TARAUEUSES A CHANGEMENT RAPIDE
MASCHIATORE A CAMBIO RAPIDO CON GAMBO FILETTATO



Code N.	Description	Size	Top range	Press	Ext	Tr	D	D2	L
M-1430	M3-M12 TR28X2 GR1	1	M3~M12	9	9	28x2	19	36	53
M-1440	M3-M12 TR36X2 GR1	1	M3~M12	9	9	36x2	19	36	55
M-1530	M8-M20 TR28X2 GR2	2	M6~M20	15	15	28x2	31	53	75
M-1540	M8-M20 TR36X2 GR2	2	M6~M20	15	15	36x2	31	53	77
M-1630	M14-M33 TR36X2 GR3	3	M14~M33	24	24	36x2	48	78	111
M-1640	M14-M33 TR48X2 GR3	3	M14~M33	24	24	48x2	48	78	115

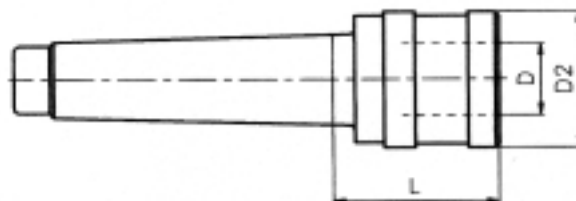
GEWINDESCHNEID SCHNELLWECHSEL FUTTER MIT MORSEKEGELSCHAFT
QUICK CHANGE TAP HOLDERS WITH MK SHANK
TARAUEUSES A CHANGEMENT RAPIDE AVEC ADAPTEUR MK
MASCHIATORE A CAMBIO RAPIDO CON ATTACCO CONO MORSE



Code N.	Description	Size	Top range	Press	Ext	Mk Morse	D	D2	L
M-1810	M3-M12 CM2B GR1	1	M3~M12	9	9	2	19	36	46
M-1820	M3-M12 CM3B GR1	1	M3~M12	9	9	3	19	36	46
M-1920	M8-M20 CM3B GR2	2	M6~M20	15	15	3	31	53	68
M-1930	M8-M20 CM4B G2	2	M6~M20	15	15	4	31	53	70
M-2030	M14-M33 CM4B GR3	3	M14~M33	24	24	4	48	78	108
M-2040	M14-M33 CM5B GR3	3	M14~M33	24	24	5	48	78	103

DIN 228 - A

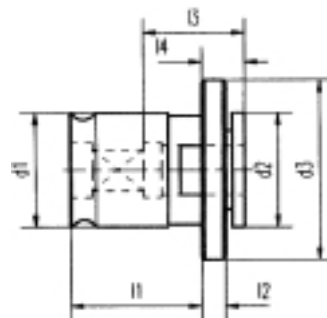
GEWINDESCHNEID SCHNELLWECHSEL FUTTER MIT MORSEKEGELSCHAFT
QUICK CHANGE TAP HOLDERS WITH MK SHANK
TARAUEUSES A CHANGEMENT RAPIDE AVEC ADAPTEUR MK
MASCHIATORE A CAMBIO RAPIDO CON ATTACCO CONO MORSE



Code N.	Description	Size	Top range	Press	Ext	Mk Morse	D	D2	L
M-2210	M3-M12 CM2 A GR1	1	M3~M12	9	9	2	19	36	46
M-2220	M3-M12 CM3 A GR1	1	M3~M12	9	9	3	19	36	46
M-2320	M8-M20 CM3 A GR2	2	M8-M20	15	15	3	31	53	68
M-2330	M8-M20 CM4 A GR2	2	M8-M20	15	15	4	31	53	70
M-2430	M14-M33 CM4 A GR3	3	M14-M33	24	24	4	48	78	108
M-2440	M14-M33 CM5 A GR3	3	M14-M33	24	24	5	48	78	103

SCHNELLWECHSELEINSÄTZE OHNE SICHERHEITSKUPPLUNG
QUICK CHANGE TAPPING ADAPTERS WITHOUT SAFETY COUPLING
ADAPTEURS A CHANGEMENT RAPIDE SANS COUPLAGE DE SECURITE
BUSSOLA PER MASCHERARE SENZA FRIZIONE

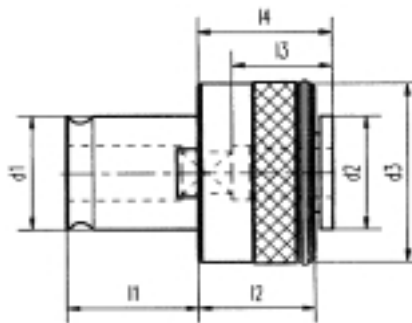
IBC



Code N.	Tap shank	∅	Size	l1	l2	l3	l4	d1	d2	d3		
IBC 1	IBC1-3,5	3,5	2,7	1	21,5	4	17	7	19	19	30	
	IBC1-4,5	4,5	3,4	1	21,5	4	17	7	19	19	30	
	IBC1-5,5	5,5	4,3	1	21,5	4	17	7	19	19	30	
	IBC1-6	6	4,9	1	21,5	4	17	7	19	19	30	
	IBC1-7	7	5,5	1	21,5	4	17	7	19	19	30	
	IBC1-8	8	6,2	1	21,5	4	17	7	19	19	30	
	IBC1-9	9	7	1	21,5	4	17	7	19	19	30	
	IBC1-10	10	8	1	21,5	4	17	7	19	19	30	
	IBC1-11	11	9	1	21,5	4	17	7	19	19	30	
	IBC 2	IBC2-6	6	4,9	2	35	5	30	11	30	31	48
		IBC2-7	7	5,5	2	35	5	30	11	30	31	48
IBC2-8		8	6,2	2	35	5	30	11	30	31	48	
IBC2-9		9	7	2	35	5	30	11	30	31	48	
IBC2-10		10	8	2	35	5	30	11	30	31	48	
IBC2-11		11	9	2	35	5	30	11	30	31	48	
IBC2-12		12	9	2	35	5	30	11	30	31	48	
IBC2-14		14	11	2	35	5	30	11	30	31	48	
IBC2-16		16	12	2	35	5	30	11	30	31	48	
IBC2-18		18	14,6	2	35	5	30	11	30	31	48	
IBC 3	IBC3-11	11	9	3	55,5	6	44	14	48	48	70	
	IBC3-12	12	9	3	55,5	6	44	14	48	48	70	
	IBC3-14	14	11	3	55,5	6	44	14	48	48	70	
	IBC3-16	16	12	3	55,5	6	44	14	48	48	70	
	IBC3-18	18	14,6	3	55,5	6	44	14	48	48	70	
	IBC3-20	20	16	3	55,5	6	44	14	48	48	70	
	IBC3-22	22	18	3	55,5	6	44	14	48	48	70	
	IBC3-25	25	20	3	55,5	6	44	14	48	48	70	
IBC3-28	28	22	3	55,5	6	44	14	48	48	70		

SCHNELLWECHSELEINSÄTZE MIT SICHERHEITSKUPPLUNG
QUICK CHANGE TAPPING ADAPTERS WITH SAFETY COUPLING
ADAPTEURS A CHANGEMENT RAPIDE AVEC COUPLAGE DE SECURITE
BUSSOLA PER MASCHIARE CON FRIZIONE

IBS



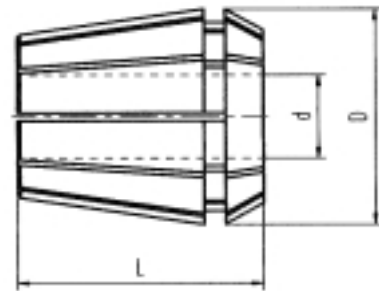
Code N.	Top shank	∅	Size	l1	l2	l3	l4	d1	d2	d3	
IBS 1	IBS1-3,5	3,5	2,7	1	21,5	25	17	25	19	19	32
	IBS1-4,5	4,5	3,4	1	21,5	25	17	25	19	19	32
	IBS1-5,5	5,5	4,3	1	21,5	25	17	25	19	19	32
	IBS1-6	6	4,9	1	21,5	25	17	25	19	19	32
	IBS1-7	7	5,5	1	21,5	25	17	25	19	19	32
	IBS1-8	8	6,2	1	21,5	25	17	25	19	19	32
	IBS1-9	9	7	1	21,5	25	17	25	19	19	32
	IBS1-10	10	8	1	21,5	25	17	25	19	19	32
	IBS1-11	11	9	1	21,5	25	17	25	19	19	32
	IBS 2	IBS2-6	6	4,9	2	35	31	30	34	30	31
IBS2-7		7	5,5	2	35	31	30	34	30	31	50
IBS2-8		8	6,2	2	35	31	30	34	30	31	50
IBS2-9		9	7	2	35	31	30	34	30	31	50
IBS2-10		10	8	2	35	31	30	34	30	31	50
IBS2-11		11	9	2	35	31	30	34	30	31	50
IBS2-12		12	9	2	35	31	30	34	30	31	50
IBS2-14		14	11	2	35	31	30	34	30	31	50
IBS2-16		16	12	2	35	31	30	34	30	31	50
IBS2-18		18	14,6	2	35	31	30	34	30	31	50
IBS 3	IBS3-11	11	9	3	55,5	41	44	45	48	48	72
	IBS3-12	12	9	3	55,5	41	44	45	48	48	72
	IBS3-14	14	11	3	55,5	41	44	45	48	48	72
	IBS3-16	16	12	3	55,5	41	44	45	48	48	72
	IBS3-18	18	14,6	3	55,5	41	44	45	48	48	72
	IBS3-20	20	16	3	55,5	41	44	45	48	48	72
	IBS3-22	22	18	3	55,5	41	44	45	48	48	72
	IBS3-25	25	20	3	55,5	41	44	45	48	48	72
IBS3-28	28	22	3	55,5	41	44	45	48	48	72	

MASSE DER GEWINDEBOHRERSCHÄFTE
TABLE OF TAP SHANKS DIMENSIONS
TABLEAU DIMENSIONNEL DES QUEUES DE TARAUDS
TABELLA DIMENSIONAMENTO GAMBI PER MASCHI

Shank	Normal DIN352	Reinforced DIN 371	Normal DIN376	Normal ISO	Reinforced ISO
2,5x2,1	M1	M1	M3,5		
2,5x2,1	M1,4	M1,4			
2,5x2,1	M1,6	M1,6			
2,5x2,1	M1,8	M1,8			
2,8x2,1	M2	M2	M4		
2,8x2,1	M2,2	M2,2			
2,8x2,1	M2,5	M2,5			
3,15x2,5				M4	M3
3,5x2,7	M3	M3	M5		
3,55x2,8				M4,5	M3,5
4x3,15	M3,5	M3,5		M5	M4
4,5x3,4	M4	M4	M6		
5x4					M5
6x4,9	M5	M5			
6x4,9	M6	M6			
6x4,9	M8		M8		
6,3x5				M8	M6
7x5,5	M10		M10		
8x6,3		M8		M10	M8
9x7,1	M12		M12	M12	
10x8		M10			M10
11x9	M14		M14		
12x9	M16		M16		
12,5x10				M16	
14x11	M18		M18		
14x11,2				M18	
14x11,2				M20	
16x12	M20		M20		
16x12,5				M22	
18x14				M24	
18x14,5	M22		M22		
18x14,5	M24		M24		
20x16	M27		M27	M27	
20x16				M30	
22x18	M30		M30		
25x20	M33		M33	M36	
28x22	M36		M36		
32x24	M39		M39		
32x24	M42		M42		
36x29	M45		M45		
36x29	M48		M48		

ER TYP SPANNZANGEN
COLLETS ER TYPE
PINCES TYPE ER
PINZE TIPO ER

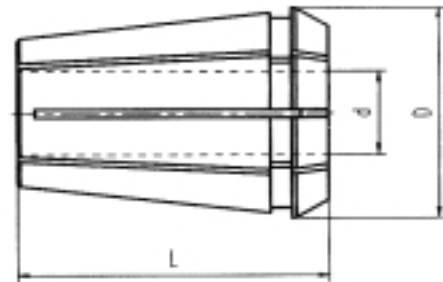
DIN 6499



Type	D	L	Clamplng capacity
ER8	8,5	13,5	1÷5
ER11	11,5	18	1÷7
ER16	17	27	1÷10
ER20	21	31,5	1÷13
ER25	26	35	0,5÷16
ER32	33	40	2÷20
ER40	41	46	3÷30

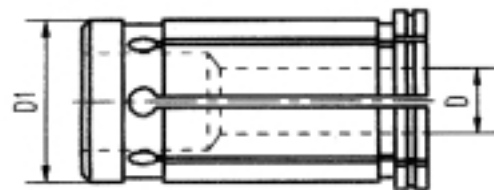
EOC TYP SPANNZANGEN
COLLETS EOC TYPE
PINCES TYPE EOC
PINZE TIPO EOC

DIN 6388



Type	D	L	Clamplng capacity
EOC16B	25.5	40	2-16
EOC25B	35.05	52	2-25
EOC32B	43.7	60	4-32

SPANNZANGEN FÜR KRAFTSPANNFUTTER
END MILL COLLETS FOR MILLING CHUCK
PINCES POUR MANDRINS A FORT SERRAGE
PINZE PER MANDRINI A FORTE SERRAGGIO



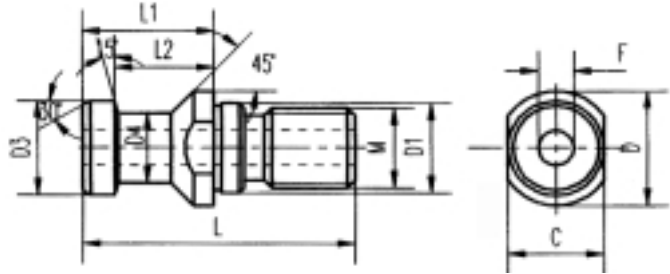
Type	D1	D hole size
K20	20	6.8.10.12.16
K32	32	6.8.10.12.16.20.25

SPANNBOLZEN DIN 69872
 DIN 69872 PULL STUDS
 TIRETTES DIN 69872
 CODOLI DI AGGANCIO DIN 69872

DIN 69872

Gebohrt / Drilled / Percée / Forato

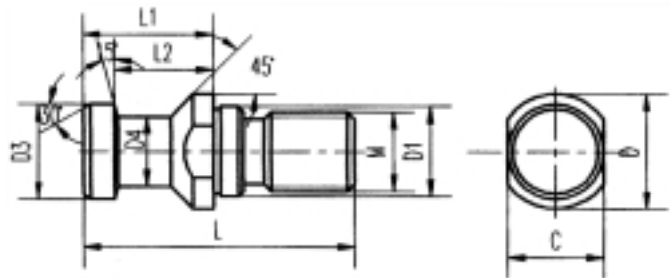
DIN 69872 A



Code N.	ISO	M	D	D1	D3	D4	L	L1	L2	C	F
217-21203	30	M12	17	13	13	9	44	24	19	14	3
217-21201	40	M16	23	17	19	14	54	26	20	19	7
217-21202	50	M24	36	25	28	21	74	34	25	30	11,5

Ohne bohrung / Not drilled / Non Percée / Non forato

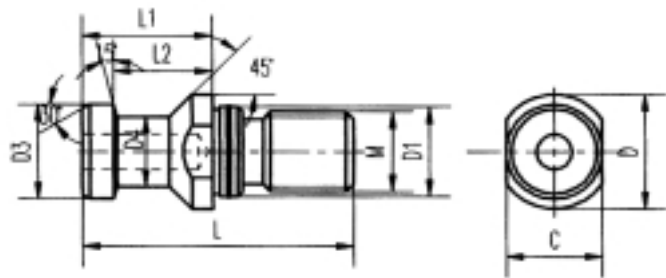
DIN 69872 A



Code N.	ISO	M	D	D1	D3	D4	L	L1	L2	C
217-21206	30	M12	17	13	13	9	44	24	19	14
217-21207	40	M16	23	17	19	14	54	26	20	19
217-21208	50	M24	36	25	28	21	74	34	25	30

Mit O'ring / With O'ring / Avec joint torique / Con OR di tenuta

DIN 69872 B

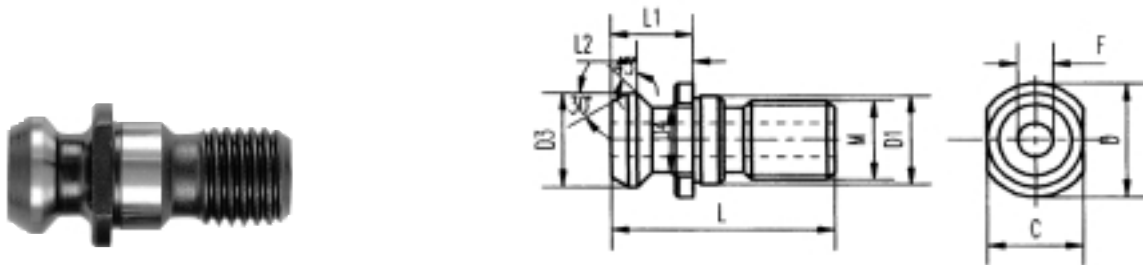


Code N.	ISO	M	D	D1	D3	D4	L	L1	L2	C
217-21303	30	M12	17	13	13	9	44	24	19	14
217-21301	40	M16	23	17	19	14	54	26	20	19
217-21302	50	M24	36	25	28	21	74	34	25	30

SPANNBOLZEN ISO 7388/2-B
ISO 7388/2-B PULL STUDS
TIRETTES ISO 7388/2-B
CODOLI DI AGGANCIO ISO 7388/2-B

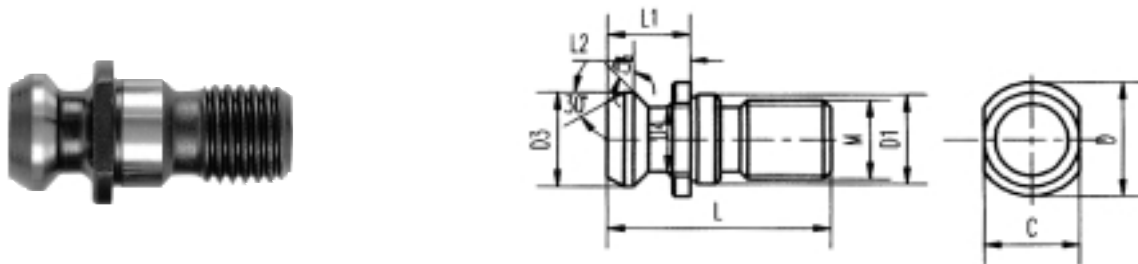
ISO 7388/2-B

Gebohrt / Drilled / Percée / Forato



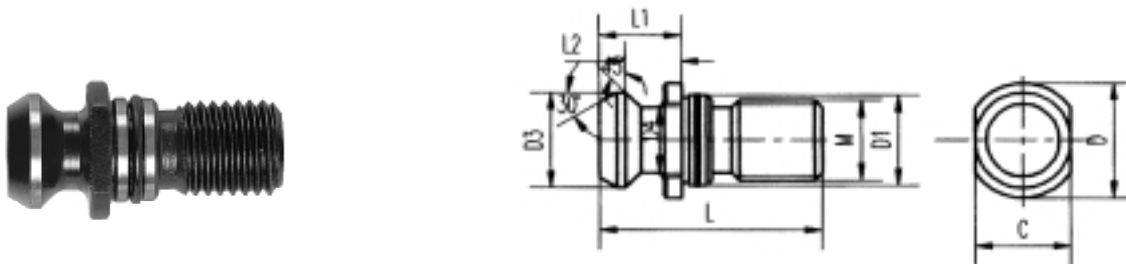
Code N.	ISO	M	D	D1	D3	D4	L	L1	L2	C	F
217-21603	30	M12	17	12,5	13,3	9,3	34	11,8	8,1	14	3,5
217-21601	40	M16	22,5	17	18,9	12,9	44,5	16,4	11,2	18	7,3
217-21602	50	M24	37	25	29,1	19,6	65,5	25,5	17,9	30	11,5

Ohne boh rung / Not drilled / Non Percée / Non forato



Code N.	ISO	M	D	D1	D3	D4	L	L1	L2	C
217-21607	30	M12	17	12,5	13,3	9,3	34	11,8	8,1	14
217-21608	40	M16	22,5	17	18,9	12,9	44,5	16,4	11,2	18
217-21609	50	M24	37	25	29,1	19,6	65,5	25,5	17,9	30

Mit O'ring / With O'ring / Avec joint torique / Con OR di tenuta

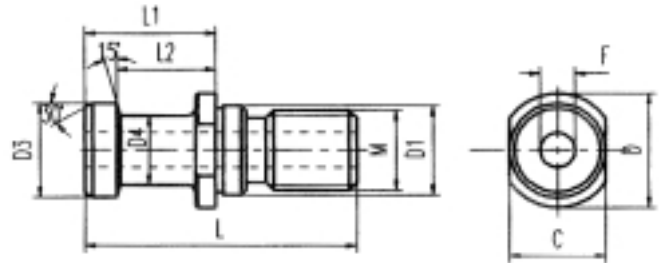


Code N.	ISO	M	D	D1	D3	D4	L	L1	L2	C
217-21611	40	M16	22,5	17	18,9	12,9	44,5	16,4	11,2	18
217-21612	50	M24	37	25	29,1	19,6	65,5	25,5	17,9	30

SPANNBOLZEN ISO 7388/2-A
 ISO 7388/2-A PULL STUDS
 TIRETTES ISO 7388/2-A
 CODOLI DI AGGANCIO ISO 7388/2-A

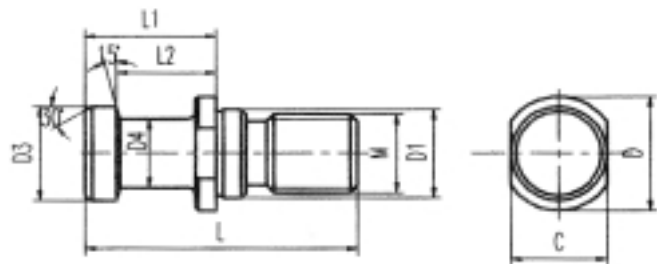
ISO 7388/2-A

Gebohrt / Drilled / Percée / Forato



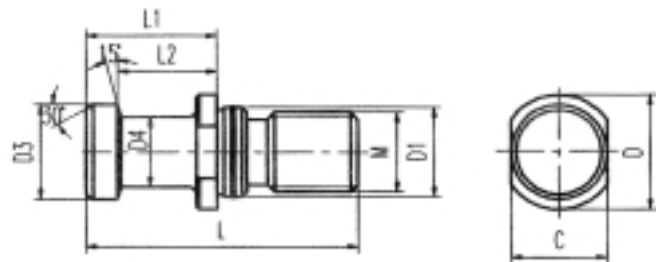
Code N.	ISO	M	D	D1	D3	D4	L	L1	L2	C	F
217-21613	30	M12	16	13	12	8	44	24	19	14	3
217-21614	40	M16	23	17	19	14	54	26	20	19	7
217-21615	50	M24	36	25	28	21	74	34	25	30	11,5

Ohne bohrung / Not drilled / Non Percée / Non forato



Code N.	ISO	M	D	D1	D3	D4	L	L1	L2	C
217-21616	30	M12	16	13	12	8	44	24	19	14
217-21617	40	M16	23	17	19	14	54	26	20	19
217-21618	50	M24	36	25	28	21	74	34	25	30

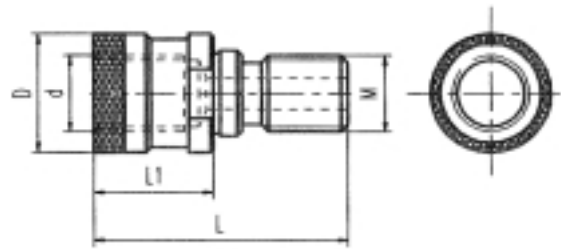
Mit O'ring / With O'ring / Avec joint torique / Con OR di tenuta



Code N.	ISO	M	D	D1	D3	D4	L	L1	L2	C
217-21619	40	M16	23	17	19	14	54	26	20	19
217-21620	50	M24	36	25	28	21	74	34	25	30

SPANNBOLZEN MIT RINGNUT NACH DIN 2080
ADAPTOR PULL STUDS ACCORDING TO DIN 2080
ADAPTATION SUIVANT DIN 2080
CODOLO ADATTATORE DIN 2080

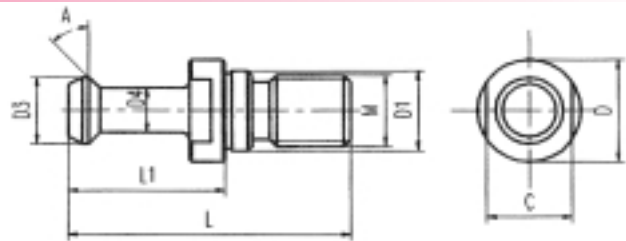
OTT-SYSTEM



Code N.	ISO	M	d	D	L	L1
217-22025	TC40	M16	M16	25	53	25
217-22024	50	M24	M24	39,29	68	25
217-22040	BT40	M16	M16	25	56	28

SPANNBOLZEN MAS-BT
MAS-BT PULL STUDS
TIRETTES MAS-BT
CODOLI DI AGGANCIO MAS-BT

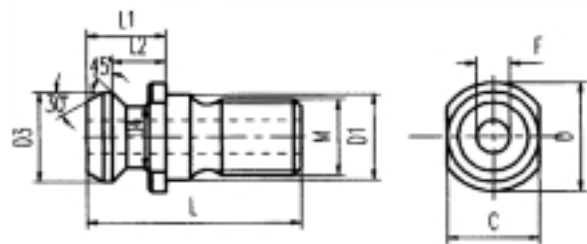
MAS-BT



Code N.	ISO	A	M	L1	L	D	D1	D3	D4	C
217-21508	30	30 ∞	M12	23	43	16	12,5	11	7	13
217-21507	30	45 ∞	M12	23	43	16	12,5	11	7	13
217-21502	40	30 ∞	M16	35	60	23	17	15	10	19
217-21501	40	45 ∞	M16	35	60	23	17	15	10	19
217-21503	40	90 ∞	M16	35	60	23	17	15	10	19
217-21505	50	30 ∞	M24	45	85	38	25	23	17	30
217-21504	50	45 ∞	M24	45	85	38	25	23	17	30
217-21506	50	90 ∞	M24	45	85	38	25	23	17	30

SPANNBOLZEN TYP MAZAK
MAZAK TYPE PULL STUDS
TIRETTES TYPE MAZAK
CODOLI DI AGGANCIO TIPO MAZAK

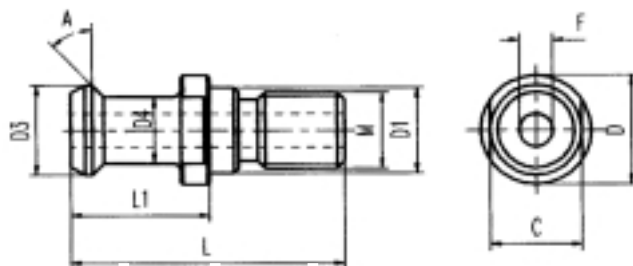
MAZAK



Code N.	ISO	M	D	D1	D3	D4	L	L1	L2	C	F
217-22003	40	M16	21,8	17	18,79	12,44	41,25	16,25	11,17	19	7
217-22047	40	M16	22	17	18,79	12,44	44,10	19,1	14,02	19	7

SPANNBOLZEN JIS. B6339
JIS. B6339 PULL STUD
TIRETTE JIS. B6339
CODOLO DI AGGANCIO JIS. B6339

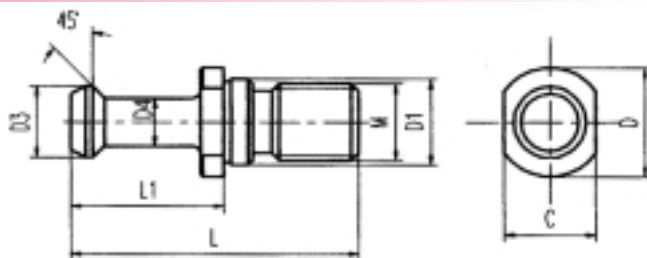
JIS. B6339



Code N.	ISO	A	M	D	D1	D3	D4	L	L1	C	F1
217-22134	40	15	M16	23	17	19	14	54	29	19	7

SPANNBOLZEN CHIRON
CHIRON PULL STUD
TIRETTE CHIRON
CODOLO DI AGGANCIO CHIRON

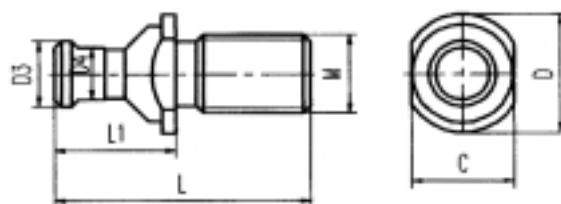
CHIRON



Code N.	ISO	M	D	D1	D3	D4	L	L1	C
217-22048	30	M12	16	13	10	6	36	20	14

SPANNBOLZEN CORREA
CORREA PULL STUD
TIRETTE CORREA
CODOLO DI AGGANCIO CORREA

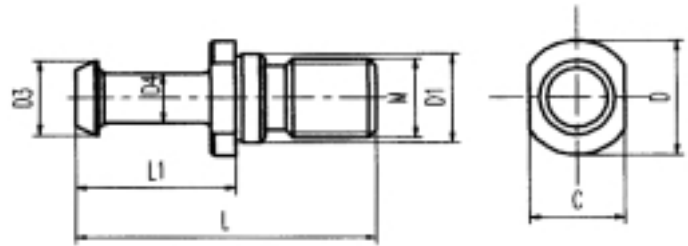
CORREA



Code N.	ISO	M	D	D3	D4	L	L1	C
217-22135	50	M24	36	20	16	76	36	20

SPANNBOLZEN OLIVETTI OGN
OLIVETTI OGN PULL STUD
TIRETTE OLIVETTI OGN
CODOLO DI AGGANCIO OLIVETTI OGN

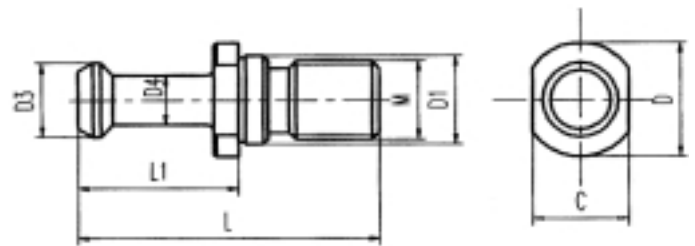
OLIVETTI OGN



Code N.	ISO	M	D	D1	D3	D4	L	L1	C
217-22136	40	M16	23	17	14,3	10	58	33	19

SPANNBOLZEN TYP FAMUP
FAMUP TYPE PULL STUDS
TIRETTES TYPE FAMUP
CODOLI DI AGGANCIO TIPO FAMUP

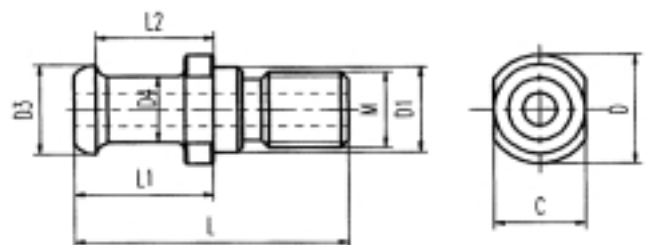
FAMUP



Code N.	ISO	M	D	D1	D3	D4	L	L1	C
217-22137	30	M12	16	13	9,8	5,8	40	20	14
217-22051	40	M16	23	17	13,8	9,8	55	27	19
217-22052	40	M16	23	17	13,8	9,8	58	30	19

SPANNBOLZEN CB FERRARI
CB FERRARI PULL STUD
TIRETTE CB FERRARI
CODOLO DI AGGANCIO CB FERRARI

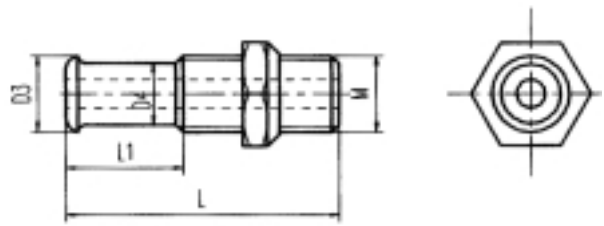
CB FERRARI



Code N.	ISO	M	D	D1	D3	D4	L	L1	L2	C
217-22017	40	M16	23	17	19	15	54	26	20,31	19

SPANNBOLZEN CB FERRARI MIT SCHRAUBENMUTTER
CB FERRARI WITH NUT PULL STUD
TIRETTE CB FERRARI AVEC ECROU
CODOLO DI AGGANCIO CB FERRARI CON DADO

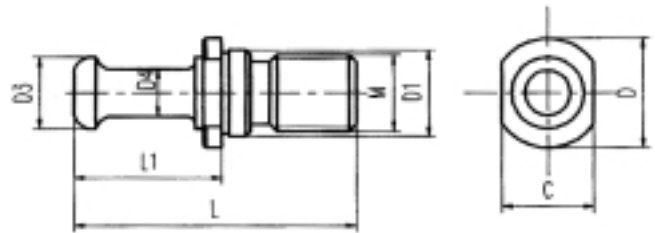
CB FERRARI



Code N.	ISO	M	D3	D4	L	L1
217-22046	40	M16	16	12	57	23

SPANNBOLZEN TYP RAMBAUDI
RAMBAUDI TYPE PULL STUDS
TIRETTES TYPE RAMBAUDI
CODOLO DI AGGANCIO TIPO RAMBAUDI

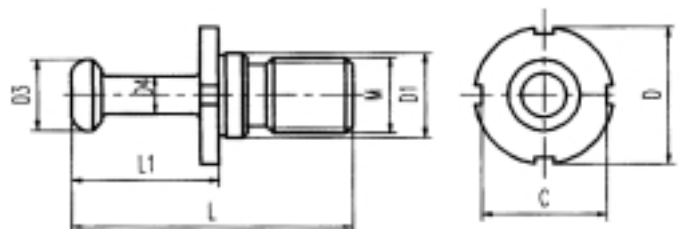
RAMBAUDI



Code N.	ISO	M	D	D1	D3	D4	L	L1	C
217-22049	40	M16	24	17	14,6	10	52	27	19
217-22050	50	M24	35,8	25	20	16	79,5	39,5	30

SPANNBOLZEN SECMU
SECMU PULL STUD
TIRETTE SECMU
CODOLO DI AGGANCIO SECMU

SECMU



Code N.	ISO	M	D	D1	D3	D4	L	L1	C
217-22138	50	M24	40	25	17,5	10	64	30	36



Code N	ISO	Attack
237-32110	30	DIN 2080
237-32310	40	DIN 2080
237-32510	50	DIN 2080
237-32120	30	DIN 69871
237-32320	40	DIN 69871
237-32520	50	DIN 69871
237-32130	30	MAS 403/BT
237-32330	40	MAS 403/BT
237-32530	50	MAS 403/BT

Dieses unkompliziertes System erlaubt die schnelle und sichere Montage und Demontage von Steilkegelaufnahmen in horizontaler und vertikaler Lage. Das Risiko der Werkzeugbeschädigung ist ausgeschlossen. Das ist ein sehr einfaches System, das sich für Steilkegekaufnahme eignet.

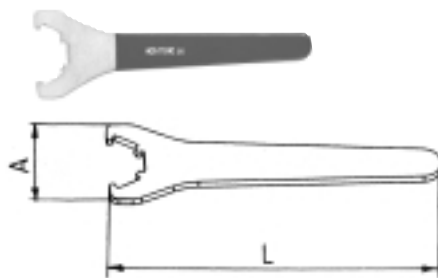
It is very useful for all assembly and disassembly operations of the tools on the toolholders, either in horizontal or in vertical position. This process is carried out without any risk to damage casually the tool or the toolholder. It is a very simple system suitable for monolithic toolholders.

Il permet de effectuer toutes les opérations de montage / assemblage / démontage des outils sur les mandrins. Ces procès se déroulent avec rationalité, sûreté, vitesse et sans aucun risque d'endommagement accidentel du mandrin ou de l'outil. C'est un système qui offre la plus haute simplicité d'usage et il est bien indiqué pour les mandrin monolithiques.

Consente di effettuare tutte le operazioni di montaggio e smontaggio degli utensili sui mandrini, sia in orizzontale che in verticale. Questi procedimenti avvengono con razionalità, sicurezza, rapidità e senza alcun rischio di danneggiare il mandrino o l'utensile. E' il sistema che offre la massima semplicità d'uso per i mandrini monolitici.

SPANNSCHLÜSSEL FÜR STANDARD SPANNMUTTER
WRENCHES FOR STANDARD NUT
CLES DE SERRAGE POUR ECROU STANDARD
CHIAVI PER GHIERA STANDARD

Code N.	ER	A	L
816-203000	16	54	165
816-203005	20	60	180
816-203001	25	70	200
816-203002	32	80	250
816-203003	40	95	280



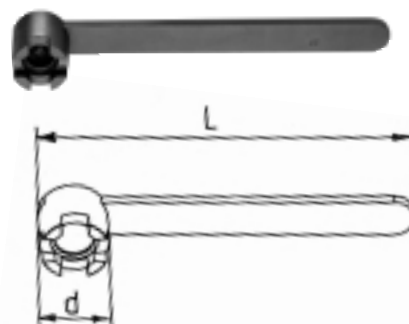
SPANNSCHLÜSSEL FÜR MINI SPANNMUTTER
WRENCHES FOR MINI NUT
CLES DE SERRAGE POUR ECROU MINI
CHIAVI PER GHIERA MINI

Code N.	ER	d	L
816-203007	8M	12,4	70
816-203008	11M	16,8	90
816-203009	16M	22,5	110
816-203010	20M	29	120
816-203011	25M	36	130



SPANNSCHLÜSSEL FÜR FRÄSERANZUGSSCHRAUBEN
WRENCH FOR TOOLS RETAINING SCREW
CLE A VIS A GROSSE
CHIAVE PER VITE TESTA A GROCE

Code N.	Size	d	L
816-130002	16/M8	22	180
816-130003	22/M10	28	200
816-130004	27/M12	35	225
816-130005	32/M16	42	250
816-130006	40/M20	52	280
816-130007	50/M24	63	315



SPANNSCHLÜSSEL FÜR ÜBERWÜRFMUTTERN
WRENCHES FOR LOCKNUT
CLES POUR COLLIERE D'ETACHEITE
CHIAVI PER GHIERA DI TENUTA

Code N.	Size	d	L
816-20204	M10/MK1	9,9	85
816-20205	M15/MK2	14,8	110
816-20206	M20/MK3	19,2	115
816-20207	M24/MK4	23	140
816-20208	M36/MK5	37	172

