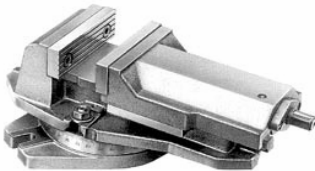


Morse modulari di precisione
High precision modular vises
Präzisions-Schraubstöcke
Étaux de fraisage de précision

Pag. - Seite

1



Morse a macchina
Machine vises
Maschinenschraubstöcke
Étaux de fraisage

Pag. - Seite

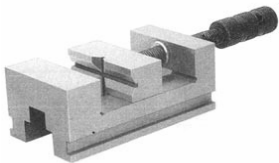
2



Serie di Parallele per fresatura
Set of precision parallels
Parallelunterlagen
Assortiments de cales de fraisage appairées

Pag. - Seite

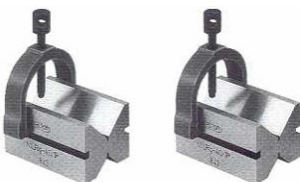
3



Morse per rettifica e controllo
Toolmakers and inspection plain vises
Schleif und Kontrollschraubstöcke
Étaux de précision pour outilleurs

Pag. - Seite

4



Coppie di prismi di precisione con morsetto
Precision " V " block and clamps. Matched Pair
Prismenpaare mit Bügel
Ves de précision avec brides de serrage

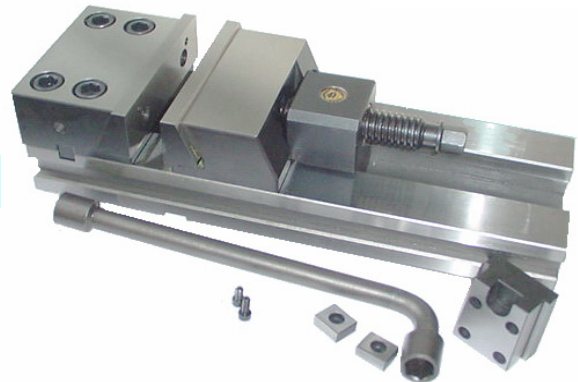
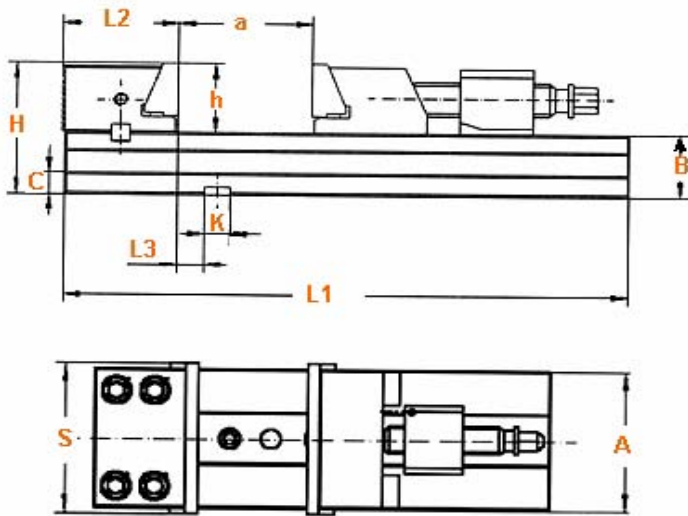
Pag. - Seite

5

25 Precision VISES

CAPORALI

Morse modulari di precisione
 High precision modular vises
 Präzisions-Schraubstöcke
 Étaux de fraiseage de précision



Ref.	Order Nr.	S x a max	H	h	K	L1	Weight Kgs	Clamp Power da N	Price
600-005	M.6557.100-320	100 x 160	70	35	12	320	10	2000	
	M.6557.125-335	125 x 160	85	43	12	335	16	3000	
	M.6557.150-425	150 x 200	109	57	20	425	33	4100	
	M.6557.150-475	150 x 250	109	57	20	475	35	4100	
	M.6557.150-520	150 x 295	109	57	20	520	37	4100	
	M.6557.200-535	200 x 260	126	65	20	535	58	4500	
	M.6557.200-585	200 x 310	126	65	20	585	61	4500	
	M.6557.200-635	200 x 360	126	65	20	635	63	4500	

CARATTERISTICHE:

- Sono utilizzate sulle macchine CNC o fresatrici convenzionali.
- Il serraggio è meccanico con la chiave in dotazione
- La ganasca fissa è reversibile, la ganasca mobile è a posizionamento rapido ed auto-allineante.
- Le ganasce bloccano con effetto discendente.
- Le morse sono costruite in acciaio temperato (RC58 min.) e rettificato con tolleranza generale di 0,02 mm.
- Fornite complete di tasselli di posizionamento per cave da 12 o 20 mm.

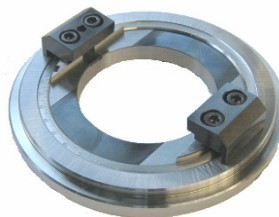
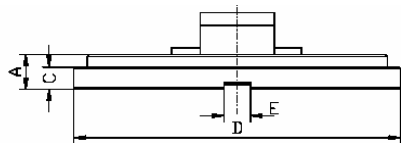
FEATURES

- Are used with CNC and standard machine tools for work in assemblies.
- Mechanical clamping system.
- Fixed jaw reversible.
- Movable jaw quick readjustable and self-adjusting.
- Both the jaws keep-down the working piece.
- The vises made of high-grade alloy steel, hardened and ground. Repeating accuracy 0,02 mm.
- Delivered with clamping wrench, slot nuts 12 or 20 mm., swinging leading plate.

25 Precision VISES

CAPORALI

Base Girevole in acciaio
Steel swivel base
Stahl-Drehplatte
Base tournante en acier



Ref.	Order Nr.	Morsa Vice	D	E	A	C	Price
600-009	BM6586-100	6577.100/320	190	12	23	13	
	BM6586-125	6577.125/335	210	12	23	15	
	BM6586-150	6577.150/425 6577.150/475 6577.150/520	245	20	28	18	
	BM6586-200	6577.200/535 6577.200/585 6577.200/635	280	20	30	20	

Morse a macchina
Machine vises
Maschinenschraubstock
Étaux de fraisage

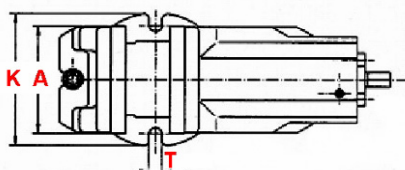
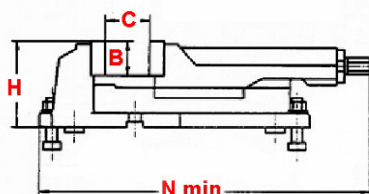
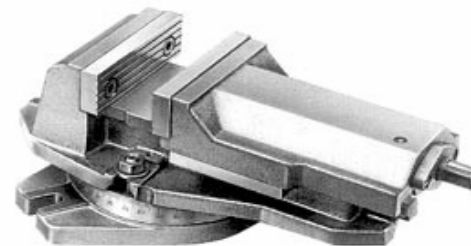
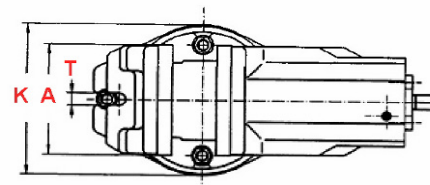
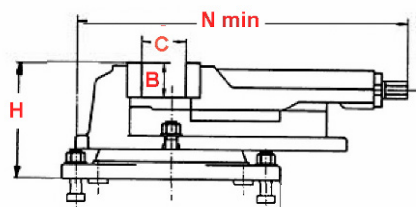


Fig. 1

Fig. 2



Ref.	Order Nr.	A x C max	H	B	K	N min	T	Weight Kgs	Clamp Power da N	Price	
600-016	Tipo fisso - Plain mill vise (Fig. 1)										
	WM 100	100 x 80	84	32	156	275	14	9	2500		
	WM 125	125 x 95	100	40	156	315	14	15	3500		
	WM 160	160 x 125	121	50	193	395	18	27	4000		
	WM 200	200 x 160	147	63	256	485	18	52	5500		
600-018	Con base girevole - With swivel plate (Fig. 2)										
	WMB 100	100 x 80	119	32	172	275	—	13	2500		
	WMB 125	125 x 95	135	40	172	315	—	18	3500		
	WMB 160	160 x 125	164	50	212	395	—	33	4000		
	WMB 200	200 x 160	196	63	285	485	—	65	5500		

CARATTERISTICHE:

- Sono utilizzate sulle fresatrici convenzionali ed i trapani.
- Il corpo è costruito in ghisa sferoidale ad alta resistenza.
- Le ganasce, removibili, sono in acciaio temperato e rettificato.
- La vite di serraggio è protetta dall'intrusione dei trucioli.

FEATURES

- Can be used on milling machines, drill presses, etc. etc.
- The body is made by high quality casting.
- The remove grooved jaw inserts are made in steel, hardened and ground.
- The lead screw is protected against dirt and chips.

25 Precision VISES

CAPORALI

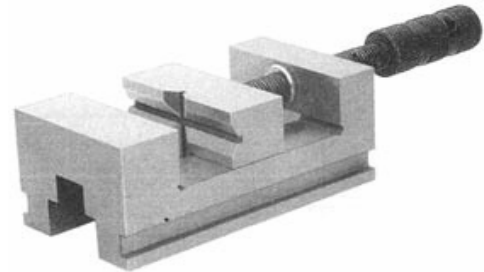
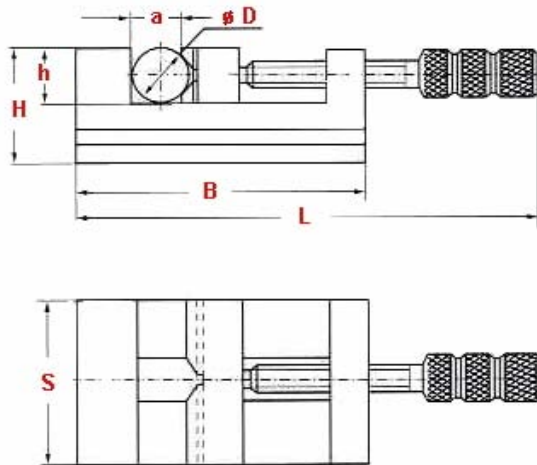
Serie di parallele per fresatura
 Set of precision parallels
 Parallelungterlagen
 Assortiments de cales de fraisage appairées



Ref.	Order Nr.	SET / L x A x B	Price
600-050	PRL 100-4	2 pcs - 100 x 4 x 10 2 pcs - 100 x 4 x 14 2 pcs - 100 x 4 x 16 2 pcs - 100 x 4 x 22 2 pcs - 100 x 4 x 26 2 pcs - 100 x 4 x 30 2 pcs - 100 x 4 x 34 2 pcs - 100 x 4 x 38 2 pcs - 100 x 4 x 42 Total 9 Pair	
	PRL 120-8	2 pcs - 120 x 8 x 12 2 pcs - 120 x 8 x 17 2 pcs - 120 x 8 x 22 2 pcs - 120 x 8 x 25 2 pcs - 120 x 8 x 28 2 pcs - 120 x 8 x 32 2 pcs - 120 x 8 x 36 2 pcs - 120 x 8 x 38 Total 8 Pair	
	PRL 160-4	2 pcs - 160 x 4 x 10 2 pcs - 160 x 4 x 14 2 pcs - 160 x 4 x 18 2 pcs - 160 x 4 x 22 2 pcs - 160 x 4 x 26 2 pcs - 160 x 4 x 30 2 pcs - 160 x 4 x 34 2 pcs - 160 x 4 x 38 2 pcs - 160 x 4 x 42 Total 9 Pair	
	PRL 160-8	2 pcs - 180 x 8 x 12 2 pcs - 180 x 8 x 17 2 pcs - 180 x 8 x 22 2 pcs - 180 x 8 x 25 2 pcs - 180 x 8 x 28 2 pcs - 180 x 8 x 32 2 pcs - 180 x 8 x 36 2 pcs - 180 x 8 x 38 Total 8 Pair	
	PRL 200-8	2 pcs - 200 x 8 x 17 2 pcs - 200 x 8 x 22 2 pcs - 200 x 8 x 25 2 pcs - 200 x 8 x 28 2 pcs - 200 x 8 x 32 2 pcs - 200 x 8 x 36 2 pcs - 200 x 8 x 38 2 pcs - 200 x 8 x 43 Total 8 Pair	

- Costruite in acciaio per utensili • Temperate e completamente rettificate
- Manufactured with alloyed tool steel • Full hardened and precision ground
- Legierter Werkzeugstahl • Gehärtet und paarweise feineschliffen
- Produit en acier-outil traitée et rectifiée par paire

Morse per rettifica e controllo
Toolmakers and inspection plain vises
 Schleif und Kontrollschraubstöcke
Étaux de précision pour outilleurs



Ref.	Order Nr.	S x a max	H	h	B	L max	D	Weight Kgs	Price
600-100	PJNK/B 263	63 x 50	47	22	120	232	4 ÷ 22	2	
	PJNK/B 280	80 x 62	56	27	146	276	5 ÷ 27	4	
	PJNK/B 2100	100 x 85	71	34	174	330	6 ÷ 35	7	

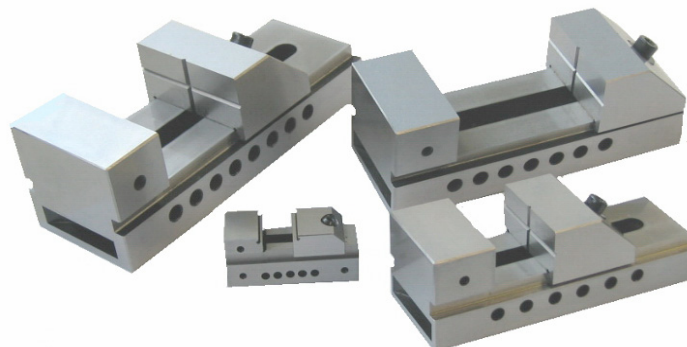
CARATTERISTICHE:

- Costruite in acciaio per utensili, temperate, stabilizzate, e finemente rettificate.
- La ganaschia mobile ha il prisma rettificato.

FEATURES:

- Made of alloy tool steel hardened and precision ground.
- The movable jaw have a ground prism.

Morse con bloccaggio rapido per rettifica e controllo
Toolmakers and inspection screw less vises . Quick acting type
 Schleif und Kontrollschraubstöcke mit Schnellverstellung
Étaux de précision pour outilleurs à serrage rapide



- Disponibili a richiesta
- Available on request
- Auf Anfrage
- Disponibles sur demande

Coppie di prismi di precisione con morsetto
 Precision " V " block and clamps. Matched Pair
 Prismenpaare mit Bügel
 Ves de précision avec brides de serrage

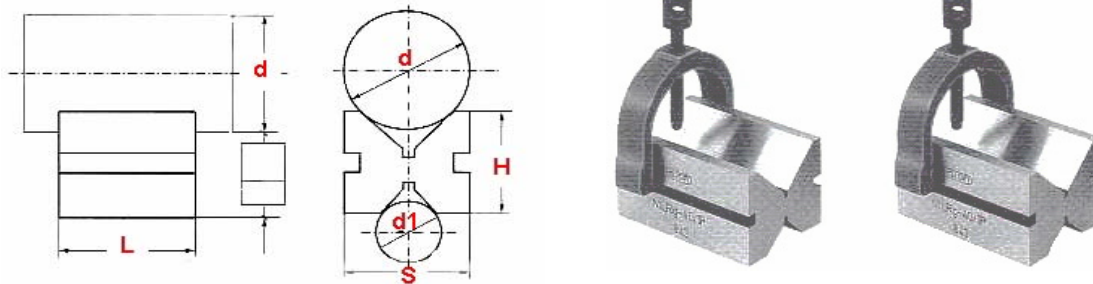


Fig. 1

Ref.	Order Nr.	Fig.	S x H	L	d	d1	Weight Kgs	Price
600-200	MRLG1-40P	1	40 x 36	45	5 ÷ 40	5 ÷ 20	0,90	
	MRLG1-45P	1	45 x 40	70	5 ÷ 45	5 ÷ 25	1,60	

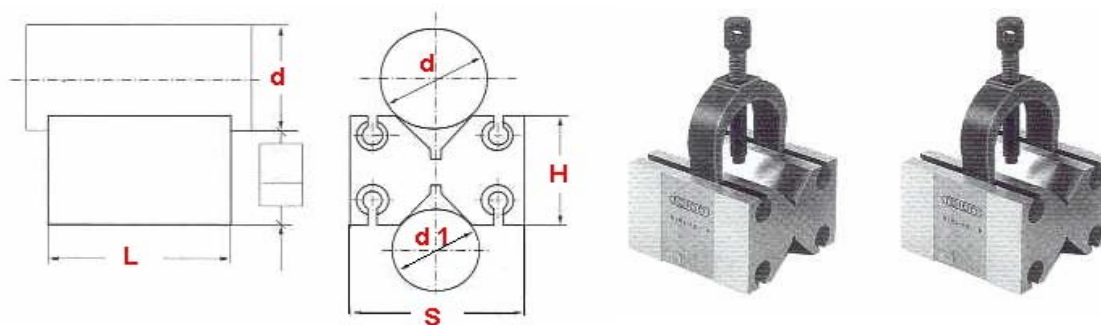


Fig. 2

Ref.	Order Nr.	Fig.	S x H	L	d	d1	Weight Kgs	Price
600-202	MRLH1-40P	2	63 x 45	70	5 ÷ 40	5 ÷ 32	2,50	
	MRLH1-53P	2	90 x 70	125	5 ÷ 53	5 ÷ 45	10,40	

CARATTERISTICHE:

- Costruiti in acciaio al cromo, temperati e finemente rettificati in coppia.
- L'angolo del prisma è a 90°.
- L'errore di parallelismo e planarità è inferiore a 0,006 mm.

FEATURES:

- Made of hardened and ground chrome steel
- The " V " angle is 90°
- All the sides are ground square and parallel to each other.