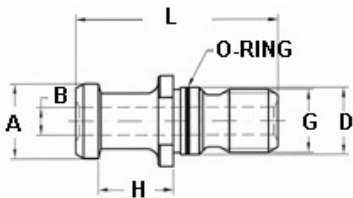


DIN 69872

Pag. - Seite

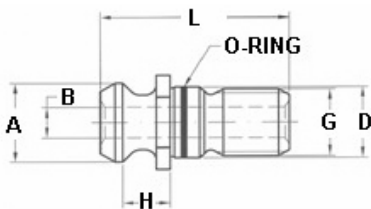
2



ISO 7388/2A

Pag. - Seite

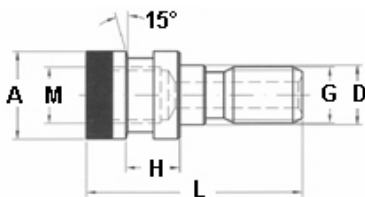
3



ISO 7388/2B

Pag. - Seite

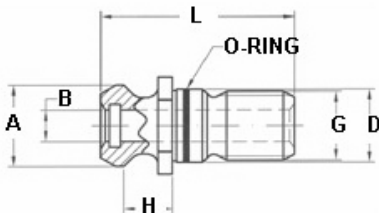
4



OTT System - DIN 69871

Pag. - Seite

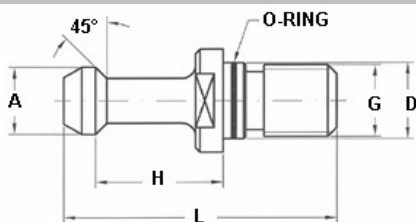
5



CAT METRIC

Pag. - Seite

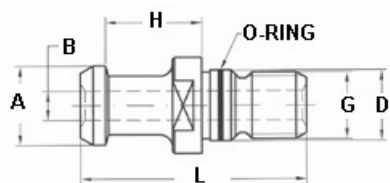
6



MAS 403 BT

Pag. - Seite

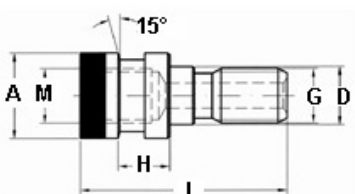
7 ÷ 8



JS-B 6339

Pag. - Seite

9



OTT System - MAS 403

Pag. - Seite

10

Codoli di Aggancio (Tiranti)
Retention Knobs (Pull Studs)
Anzugsbolzen
Embout de préhension (Tirettes)



CARATTERISTICHE TECNICHE DEI TIRANTI

- Costruiti in Italia con acciai da cementazione legati al Ni.Cr.Mo.
- Cementati, temperati, rinvenuti con durezza $RC\ 58 \pm 2$ • Filettatura protetta dalla cementazione, durezza $RC\ 40 \pm 2$.
- **RETTIFICATI SU TUTTO IL PROFILO DI AGGANCIAMENTO CON MACCHINE A CONTROLLO NUMERICO**

ATTENZIONE:

- I tiranti non sono intercambiabili, ciò significa che bisogna usare il tipo specificato dal costruttore del centro di lavoro.
- Bisogna avvitare completamente il tirante sul mandrino, possibilmente usando la chiave dinamometrica.
- La mancata osservanza di queste condizioni può provocare la caduta del portautensili dal mandrino con seri danni oltre che alla macchina anche all'operatore.

STANDARD FEATURES OF RETENTIONS KNOBS

- *Manufactured in Italy with Nickel Chrome Molybdenum Steel.*
- *Carburized, hardened and tempered $RC\ 58 \pm 2$ • The thread is soft $RC\ 40 \pm 2$ for not breaking.*
- **THE CLAMPING PROFILE IS OVERALL GROUND WITH CNC GRINDERS.**

WARNING:

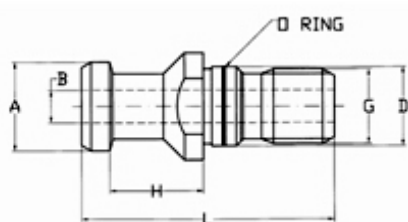
- *Retention knobs are manufactured to the specifications of the machine tool builder and any deviation could cause big problems.*
- *Retention knobs are not normally interchangeable and failure to use correct configuration can cause serious injuries to the worker or damage to the machine.*
- *Be sure to fully tighten the retention knob.*
- *Do not intermix metric retention knobs with inch tool holders.*

24 Codoli di aggancio (Tiranti)

CAPORALI

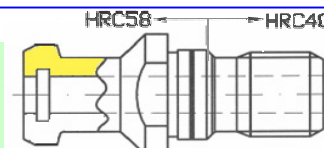
TIRANTI - PULL STUDS - ANZUGSBOLZEN - TIRETTES

FORATI - WITH COOLANT BORE (HOLLOW)
MIT BOHRUNG - PERCE'

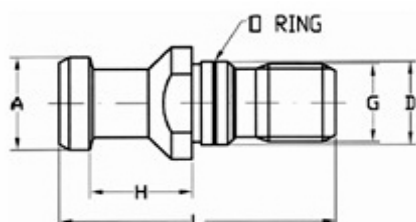


Ref. 500-001		DIN 69872 form A							
Order Nr.	☺	G	D	A	H	L	B	Tool Shank	Price
PS.DIN30A	★	M12	13	13	19	44	3	DIN 30	
PS.DIN40A		M16	17	19	20	54	7	DIN 40	
PS.DIN50A		M24	25	28	25	74	11,5	DIN 50	
★ without O-RING									

- I Tiranti con DOPPIO O-RING per refrigerante ad alta pressione, sono disponibili a richiesta
- Sealed pull studs with DOUBLE O-RING for high pressure coolant, are available on request

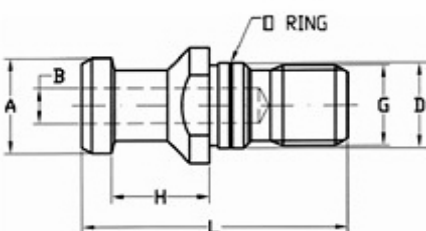


SENZA FORO - WITHOUT COOLANT BORE (SOLID)
OHNE BOHRUNG - NON PERCE'



Ref. 500-002		DIN 69872							
Order Nr.	☺	G	D	A	H	L		Tool Shank	Price
PS.DIN30SF	★	M12	13	13	19	44		DIN 30	
PS.DIN40SF		M16	17	19	20	54		DIN 40	
PS.DIN50SF		M24	25	28	25	74		DIN 50	
★ without O-RING									

SEMIFORATI - WITH HALF BORE
MIT SACHLOCHBOHRUNG - DEMI PERCE'

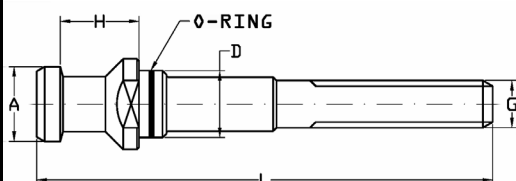


Ref. 500-005		DIN 69872 form B ①							
Order Nr.	☺	G	D	A	H	L		Tool Shank	Price
PS.DIN40B		M16	17	19	20	54		DIN 40	
PS.DIN50B		M24	25	28	25	74		DIN 50	

- ① • Intercambiabili con tipo DIN 40 e DIN 50SF
- Interchangeable with DIN 40 and DIN 50SF

☺ Ordine minimo: 10 pezzi per tipo
Min. order 10 pcs. each type

PROLUNGATI - EXTENDED for MT SLEEVES
VERLANGERTE - SERIE LONGUE



Ref. 500-006		DIN 69872							
Order Nr.	Morse Taper	G	D	A	H	L		Tool Shank	Price
PSL.DIN40.M10	2	M10	17	19	20	85		DIN 40	
PSL.DIN40.M12	3	M12	17	19	20	90		DIN 40	
PSL.DIN40.M16	4	M16	17	19	20	95		DIN 40	

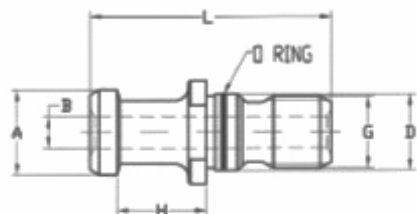
- I Tiranti prolungati per riduzioni DIN 50 sono disponibili a richiesta
- The extended pull studs for DIN 50 sleeves are available upon request

24 Codoli di aggancio (Tiranti)

CAFORALI

TIRANTI - PULL STUDS - ANZUGSBOLZEN - TIRETTES

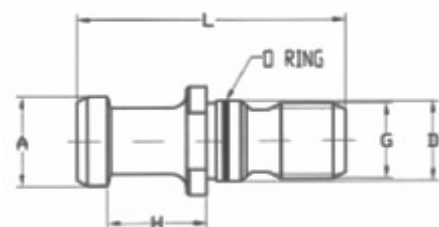
FORATI - WITH COOLANT BORE (HOLLOW)
MIT BOHRUNG - PERCE'



Ref. 501-001		ISO 7388/2 A							
Order Nr.	☺	G	D	A	H	L	B	Tool Shank	Price
PS.TC30A	★	M12	13	12	19	44	3	DIN 30	
PS.TC40A		M16	17	19	20	54	7	DIN 40	
PS.TC50A		M24	25	28	25	74	11,5	DIN 50	

★ without O-RING

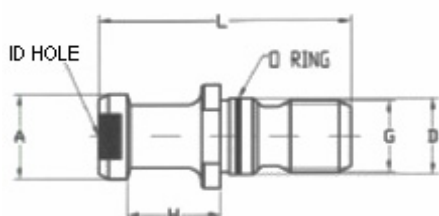
SENZA FORO - WITHOUT COOLANT BORE (SOLID)
OHNE BOHRUNG - NON PERCE'



Ref. 501-002		ISO 7388/2 A						
Order Nr.	☺	G	D	A	H	L	Tool Shank	Price
PS.TC30A.SF	★	M12	13	12	19	44	DIN 30	
PS.TC40A.SF		M16	17	19	20	54	DIN 40	
PS.TC50A.SF		M24	25	28	25	74	DIN 50	

★ without O-RING

CON SEDE CHIP - WITH ID-HOLE
MIT DETENTRAGER BOHRUNG DIN 69893
AVEC TROU POUR CHIP-MEMOIRE

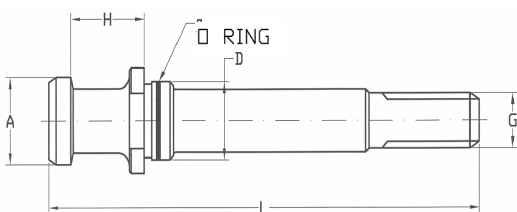


Ref. 501-003		ISO 7388/2 A							
Order Nr.	☺	G	D	A	ID Hole	H	L	Tool Shank	Price
PS.TC40BF		M16	17	19	10 x 4,7	20	54	DIN 40	
PS.TC50BF		M24	25	28	10 x 4,7	25	74	DIN 50	
PS.TC50BF1		M24	25	28	12 x 4,7	25	74	DIN 50	



Ordine minimo: 10 pezzi per tipo
Min. order 10 pcs. each type

PROLUNGATI - EXTENDED for MT SLEEVES
VERLANGERTE - SERIE LONGUE



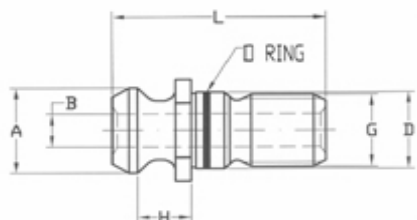
Ref. 501-006		ISO 7388/2 A						
Order Nr.	Morse	G	D	A	H	L	Tool Shank	Price
PSL.TC40.M10	2	M10	17	18,95	11,15	85	DIN 40	
PSL.TC40.M12	3	M12	17	18,95	11,15	90	DIN 40	
PSL.TC40.M16	4	M16	17	18,95	11,15	95	DIN 40	

24 Codoli di aggancio (Tiranti)

CAFORALI

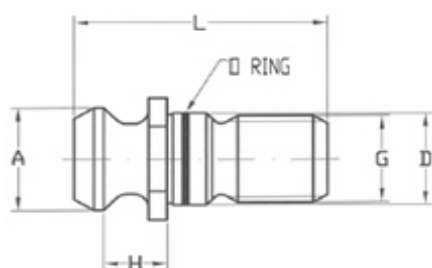
TIRANTI - PULL STUDS - ANZUGSBOLZEN - TIRETTES

FORATI - WITH COOLANT BORE (HOLLOW)
MIT BOHRUNG - PERCE'



Ref. 502-001		ISO 7388/2 B							
Order Nr.	☹	G	D	A	H	L	B	Tool Shank	Price
PS.CAT40A		M16	17	18,95	11,15	44,5	7,35	DIN 40	
PS.CAT50A		M24	25	29,10	17,95	65,5	11,55	DIN 50	

SENZA FORO - WITHOUT COOLANT BORE (SOLID)
OHNE BOHRUNG - NON PERCE'

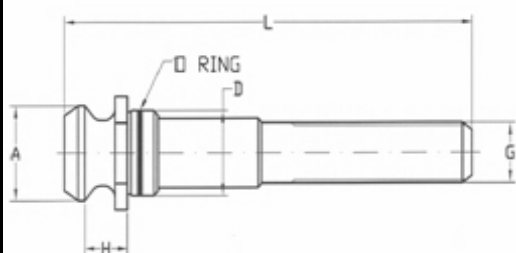


Ref. 502-002		ISO 7388/2 B						
Order Nr.	☹	G	D	A	H	L	Tool Shank	Price
PS.CAT30A.SF	★	M12	12,5	13,35	8,15	34		DIN 30
PS.CAT40A.SF		M16	17	18,95	11,15	44,5		DIN 40
PS.CAT50A.SF		M24	25	29,10	17,95	65,5		DIN 50

★ without O-RING

Ordine minimo: 10 pezzi per tipo
Min. order 10 pcs. each type

PROLUNGATI - EXTENDED for MT SLEEVES
VERLANGERTE - SERIE LONGUE



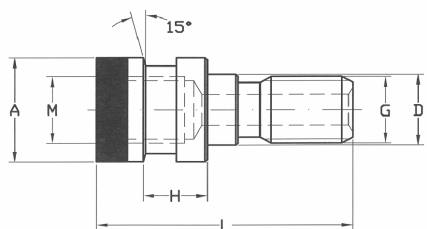
Ref. 502-006		ISO 7388/2 B EXTENDED						
Order Nr.	Morse	G	D	A	H	L	Tool Shank	Price
PSL.CAT40.M10	2	M10	17	18,95	11,15	85		DIN 40
PSL.CAT40.M12	3	M12	17	18,95	11,15	90		DIN 40
PSL.CAT40.M16	4	M16	17	18,95	11,15	95		DIN 40

24 Codoli di aggancio (Tiranti)

CAFORALI

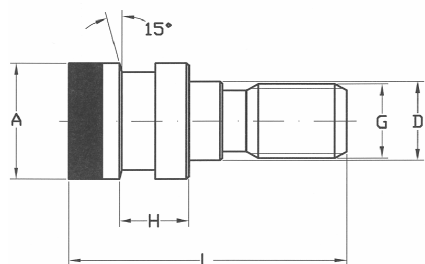
TIRANTI - PULL STUDS - ANZUGSBOLZEN - TIRETTES

FORATI - WITH COOLANT BORE (HOLLOW)
MIT BOHRUNG - PERCE'



Ref. 503-001		OTT/TC for DIN 69871 TOOLHOLDERS						
Order Nr.	G	D	A	H	L	M	Tool Shank	Price
PS.OTT40TC	M16	17	25	13,60	53	M16	DIN 40	
PS.OTT50TC	M24	25	39,6	13,35	65	M24	DIN 50	

SENZA FORO - WITHOUT COOLANT BORE (SOLID)
OHNE BOHRUNG - NON PERCE'



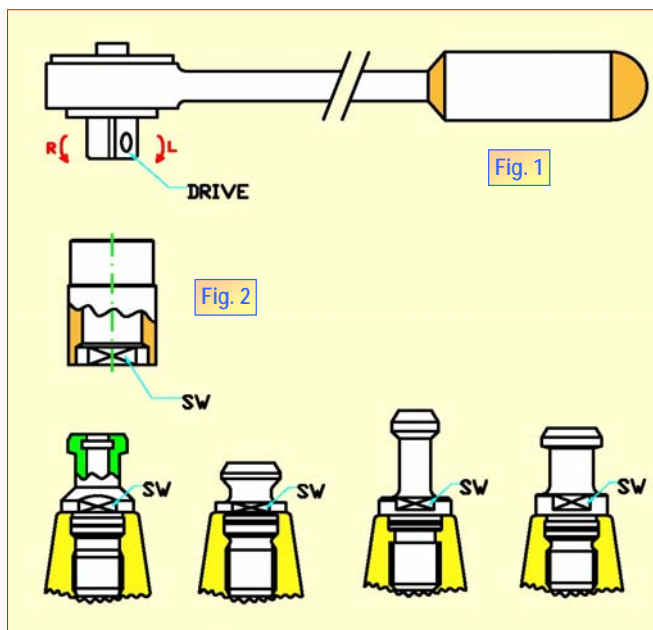
Ref. 503-002		OTT/TC for DIN 69871 TOOLHOLDERS						
Order Nr.	G	D	A	H	L	M	Tool Shank	Price
PS.OTT40TC.SF	M16	17	25	14	53		DIN 40	
PS.OTT50TC.SF	M24	25	39,6	13	65		DIN 50	

• I Tiranti PS.OTT40 e PS.OTT50 TC, permettono di utilizzare i mandrini con attacco DIN 69871 sulle fresatrici convenzionali con attacco DIN 2080

Chiavi di bloccaggio dei tiranti
Quick release Ratchet for pull studs
Spannschussel für Anzugbolzen
Clés de serrage pour tirettes

CHIAVE - RATCHET (Fig. 1)

Ref.	Order Nr.	Drive	Price
550-001	CRC38RV	3/8	

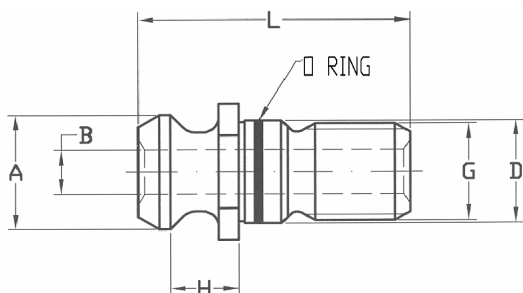


BUSSOLA - SOCKET (Fig. 2)

Ref.	Order Nr.	SW	Tirante Pull Stud	Price
550-006	SKT40.DIN	19	PS.DIN40 A-SF-B PS.TC40 A-SF	
	SKT40.CAT	18	PS.CAT40 A-SF	
	SKT50.DIN	30	PS.DIN50 A-SF-B PS.TC50 A-SF-BF	
	SKT50.CAT	30	PS.CAT50 A-SF	
	SKT40.BT	19	PS.BT40 - 1-2-3	
	SKT50.BT	30	PS.BT50 - 1-2-3	
	SKT40.JIS	19	PS.JS40 - 1-2-3	
	SKT50.JIS	30	PS.JS50	

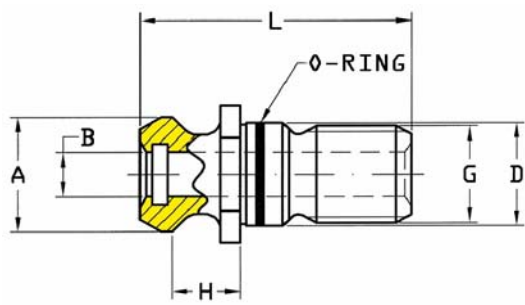
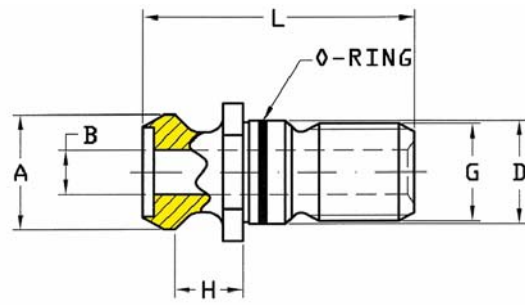
TIRANTI - PULL STUDS - ANZUGSBOLZEN - TIRETTES

For MAZAK MACHINES

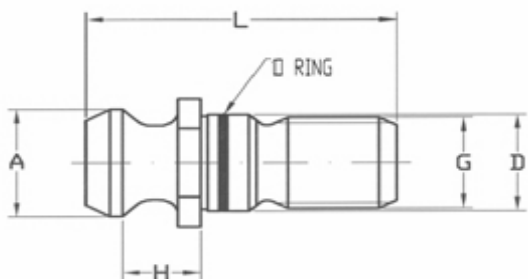


FORATI - WITH COOLANT BORE (HOLLOW)
MIT BOHRUNG - PERCE'

Ref. 505-001		CAT - METRIC								
Order Nr. ☹️	Coni Taper	G	D	A	H	L	B	MAZAK CODE	Tool Shank	Price
PS.CAT40.MZ1	CAT-METRIC	M16	17	18,8	11,17	41,25	7	349319 00 660	DIN 40	
PS.CAT40.MZ2	BT	M16	17	18,8	14,02	44,1	7	349319 00 680	BT 40	
PS.CAT40.MZ3	CAT-ANSI	5/8-11	16,27	18,8	11,17	41,25	7	349319 00 670	CAT 40	
PS.CAT50.MZ3	BT	M24	25	28,95	17,58	65,2	10	448319 01 160	BT 50	
PS.CAT50.MZ4	CAT-METRIC	M24	25	28,95	17,78	65,4	10	448319 01 180	DIN 50	
PS.CAT50.MZ5	CAT-ANSI	1" x 8	26,16	28,95	17,78	58,5	10	448319 01 170	CAT 50	

- I Tiranti con DOPPIO O-RING per refrigerante ad alta pressione, sono disponibili a richiesta
- Sealed pull studs with DOUBLE O-RING for high pressure coolant, are available on request



SENZA FORO - WITHOUT COOLANT BORE (SOLID)
OHNE BOHRUNG - NON PERCE'

Ref. 505-002		CAT - METRIC								
Order Nr. ☹️	Coni Taper	G	D	A	H	L	B	MAZAK CODE	Tool Shank	Price
PS.CAT40.MZ1SF	CAT-METRIC	M16	17	18,8	11,17	41,25	7	349319 00 660	DIN 40	
PS.CAT40.MZ2SF	BT	M16	17	18,8	14,02	44,1	7	349319 00 680	BT 40	

☹️ Ordine minimo: 10 pezzi per tipo
Min. order 10 pcs. each type

TIRANTI - PULL STUDS - ANZUGSBOLZEN - TIRETTES

SENZA FORO - WITHOUT COOLANT BORE (SOLID)
OHNE BOHRUNG - NON PERCE'

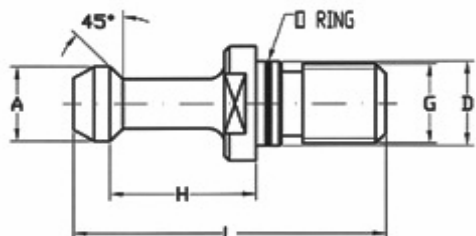


Fig. 1

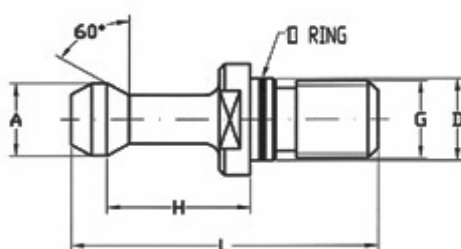


Fig. 2

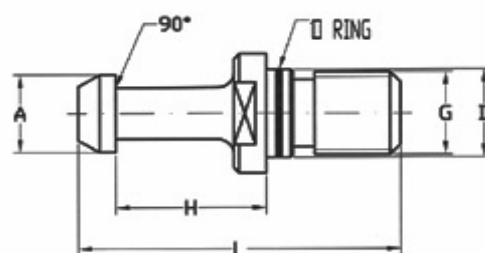


Fig. 3

Ref. 507-001	MAS 403 BT								
Order Nr. ☹️	Fig.	G	D	A	H	L	Tool Shank	Price	
PS.BT30.1	★	1	M12	12,5	11	18	43	BT 30	
PS.BT30.2	★	2	M12	12,5	11	18	43	BT 30	
PS.BT40.1		1	M16	17	15	28	60	BT 40	
PS.BT40.2		2	M16	17	15	28	60	BT 40	
PS.BT40.3		3	M16	17	15	28	60	BT 40	
PS.BT50.1		1	M24	25	23	35	85	BT 50	
PS.BT50.2		2	M24	25	23	35	85	BT 50	
PS.BT50.3		3	M24	25	23	35	85	BT 50	

★ without O-Ring



Ordine minimo: 10 pezzi per tipo
Min. order 10 pcs. each type

24 Codoli di aggancio (Tiranti)

TIRANTI - PULL STUDS - ANZUGSBOLZEN - TIRETTES

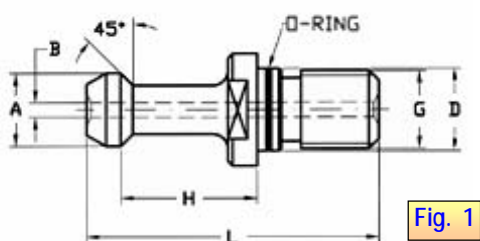


Fig. 1

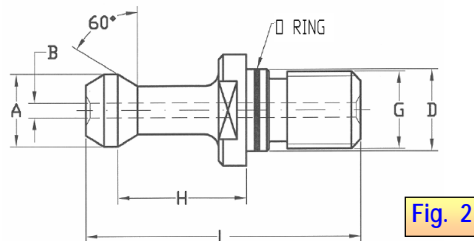


Fig. 2

FORATI - WITH COOLANT BORE (HOLLOW)
MIT BOHRUNG - PERCE'

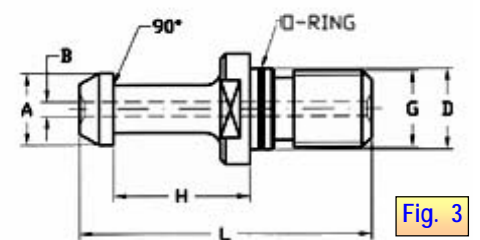


Fig. 3

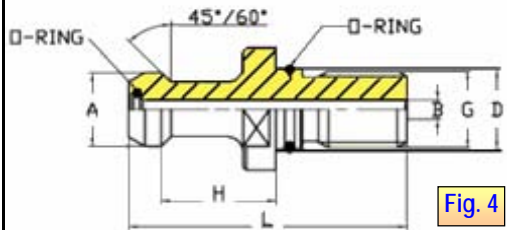
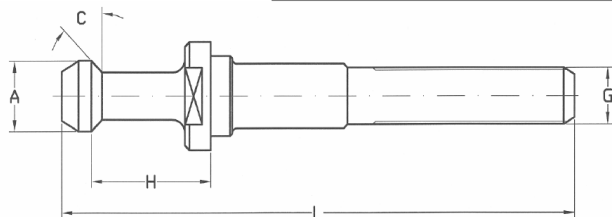


Fig. 4

Ref. 507-002		MAS 403 BT							
Order Nr.	Fig.	G	D	A	H	L	B	Tool Shank	Price
PS.BT30.1F	★ 1	M12	12,5	11	18	43	2,5	BT 30	
PS.BT30.2F	★ 2	M12	12,5	11	18	43	2,5	BT 30	
PS.BT40.1F	1	M16	17	15	28	60	3	BT 40	
PS.BT40.2F	2	M16	17	15	28	60	3	BT 40	
PS.BT40.3F	3	M16	17	15	28	60	3	BT 40	
PS.BT50.1F	1	M24	25	23	35	85	6	BT 50	
PS.BT50.2F	2	M24	25	23	35	85	6	BT 50	
PS.BT50.3F	3	M24	25	23	35	85	6	BT 50	
★ without O-RING									
Tiranti con DOPPIO O-RING per refrigerante ad alta pressione Sealed pull studs with DOUBLE O-RING for high pressure coolant									
PS.BT50.1F2OR	4	M24	25	23	35	85	6	BT 50	
PS.BT50.2F2OR	4	M24	25	23	35	85	6	BT 50	

☺ Ordine minimo: 10 pezzi per tipo
Min. order 10 pcs. each type



PROLUNGATI - EXTENDED for MT SLEEVES
VERLANGERTE - SERIE LONGUE

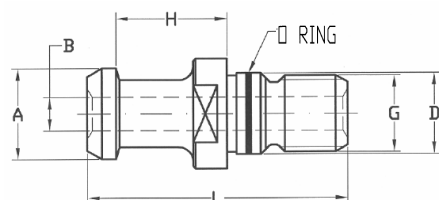
Ref. 507-006		MAS 403 BT							
Order Nr.	G	Morse	D	Angle C	A	H	L	Tool Shank	Price
PSL.BT40.1M10	M10	2	17	45°	15	5	85	BT 40	
PSL.BT40.1M12	M12	3	17	45°	15	28	85	BT 40	
PSL.BT40.1M16	M16	4	17	45°	15	28	90	BT 40	
PSL.BT40.2M10	M10	2	17	60°	15	28	85	BT 40	
PSL.BT40.2M12	M12	3	17	60°	15	28	85	BT 40	
PSL.BT40.2M16	M16	4	17	60°	15	28	90	BT 40	
PSL.BT40.3M10	M10	2	17	90°	15	28	85	BT 40	
PSL.BT40.3M12	M12	3	17	90°	15	28	85	BT 40	
PSL.BT40.3M16	M16	4	17	90°	15	28	90	BT 40	

24 Codoli di aggancio (Tiranti)

CAFORALI

TIRANTI - PULL STUDS - ANZUGSBOLZEN - TIRETTES

FORATI - WITH COOLANT BORE (HOLLOW)
MIT BOHRUNG - PERCE'



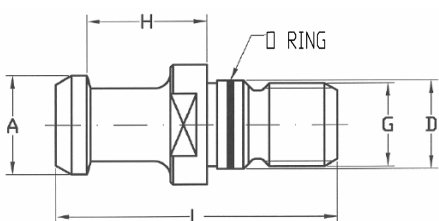
Ref. 508-001		JS-B 6339						①	
Order Nr.	☺	G	D	A	H	L	B	Tool Shank	Price
PS.JS30	★	M12	12,5	12	18,4	43	3	BT 30	
PS.JS40.01		M16	17	19	23	54	7	BT 40	
PS.JS40.02		M16	17	19	23	54	5,5	BT 40	
PS.JS40.03		M16	17	19	23	54	5,5-4	BT 40	
PS.JS40.OKU	★★	M16	17	19	23	54	5,5-4	BT 40	
PS.JS50		M24	25	28	25	74	10	BT 50	

★ without O-Ring
★★ piano testa rettificato - the head-flat is ground



I Tiranti con DOPPIO O-RING per refrigerante ad alta pressione, sono disponibili a richiesta
Sealed pull studs with DOUBLE O-RING for high pressure coolant, are available on request

SENZA FORO - WITHOUT COOLANT BORE (SOLID)
OHNE BOHRUNG - NON PERCE'



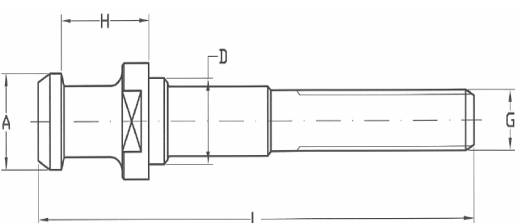
Ref. 508-002		JS-B 6339							
Order Nr.	☺	G	D	A	H	L	Tool Shank	Price	
PS.JS30SF	★	M12	12,5	12	18,4	43	BT 30		
PS.JS40SF		M16	17	19	23	54	BT 40		
PS.JS50SF		M24	25	28	25	74	BT 50		

★ without O-Ring



Ordine minimo: 10 pezzi per tipo
Min. order 10 pcs. each type

PROLUNGATI - EXTENDED for MT SLEEVES
VERLANGERTE - SERIE LONGUE



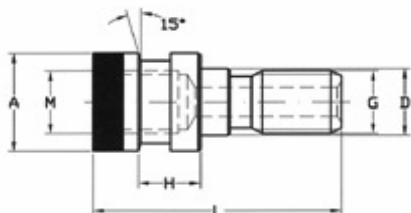
Ref. 508-006		JS-B 6339							
Order Nr.	G	Morse	D	A	H	L	Tool Shank	Price	
PSL.JS40.M10	M10	2	17	19	23	85	BT 40		
PSL.JS40.M12	M12	3	17	19	23	85	BT 40		
PSL.JS40.M16	M16	4	17	19	23	90	BT 40		

24 Codoli di aggancio (Tiranti)

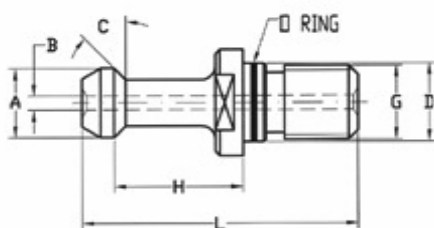
CAFORALI

TIRANTI - PULL STUDS - ANZUGSBOLZEN - TIRETTES

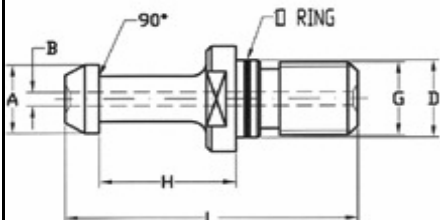
FORATI - WITH COOLANT BORE (HOLLOW)
MIT BOHRUNG - PERCE'



Ref. 510-001	OTT/BT for MAS 403 TOOLHOLDERS								
Order Nr. ☹️	G	D	A	H	L	M	Tool Shank	Price	
PS.OTT40BT	M16	17	25	16,35	56	M16	BT 40		
PS.OTT50BT	M24	25	39,6	13,35	65	M24	BT 50		



Ref. 515-001	HURCO TYPE								
Order Nr. ☹️	G	D	Angle C	A	H	L	Coolant Hole	Tool Shank	Price
PS.BT40.11	M16	17	45°	15	25,15	57,17	—	BT 40	
PS.BT40.11F	M16	17	45°	15	25,15	57,15	3	BT 40	
PS.BT40.12	M16	17	90°	15	25,15	57,15	—	BT 40	



Ref. 516-001	MITSUI SEIKI TYPE								
Order Nr. ☹️	G	D	Angle C	A	H	L	Coolant Hole	Tool Shank	Price
PS.BT40.31	M 16	17	90°	15	18	50	—	BT 40	
PS.BT50.31	M 24	25	90°	24	23	71	—	BT 50	
PS.BT50.31F	M 24	25	90°	24	23	71	8	BT 50	



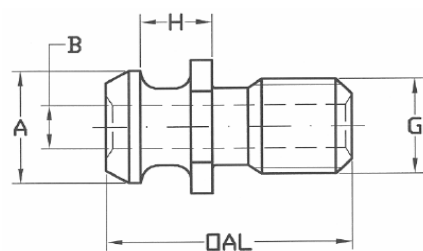
Ordine minimo: 10 pezzi per tipo
Min. order 10 pcs. each type

24 Codoli di aggancio (Tiranti)

CAPORALI

TIRANTI - PULL STUDS - ANZUGSBOLZEN - TIRETTES

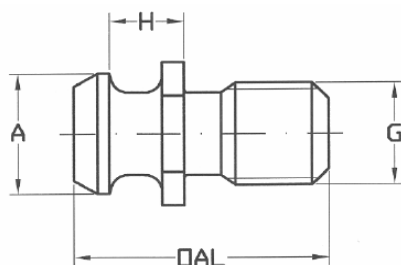
FORATI - WITH COOLANT BORE (HOLLOW)
MIT BOHRUNG - PERCE'



Ref. 530-001		ANSI B5.50/CAT (INCH-SIZES)						
Order Nr.	☹️	G	A	H	OAL	B	Tool Shank	Price
PS.ANSI 40		5/8 - 11	.740	.438	1.50	.281	CAT 40	
PS.ANSI 40M	▲	M 16	.740	.438	1.50	.281	CAT 40M	
PS.ANSI 50		1" x 8	1.14	.700	2.30	.460	CAT 50	
PS.ANSI 50M	▲	M 24	1.14	.700	2.30	.460	CAT 50M	

▲ Esecuzione speciale - Special Production

SENZA FORO - WITHOUT COOLANT BORE (SOLID)
OHNE BOHRUNG - NON PERCE'



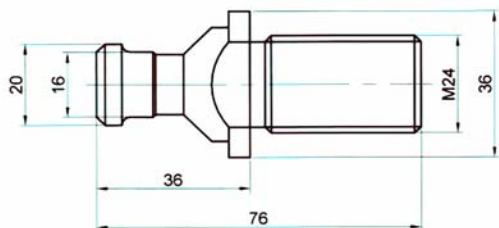
Ref. 530-002		ANSI B5.50/CAT (INCH-SIZES)						
Order Nr.	☹️	G	A	H	OAL		Tool Shank	Price
PS.ANSI 40SF		5/8 - 11	.740	.438	1.50		CAT 40	
PS.ANSI 50SF		1" x 8	1.14	.700	2.30		CAT 50	



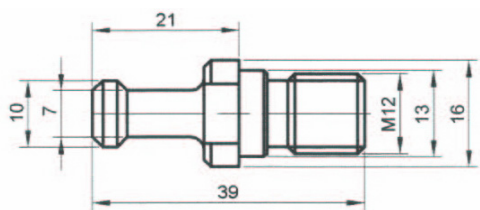
Ordine minimo: 10 pezzi per tipo
Min. order 10 pcs. each type

24 Codoli di aggancio (Tiranti)

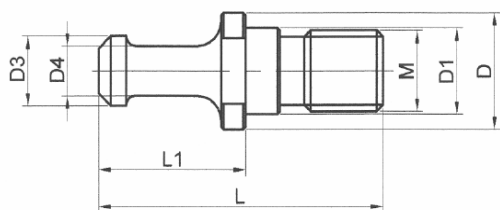
TIRANTI - PULL STUDS - ANZUGSBOLZEN - TIRETTES



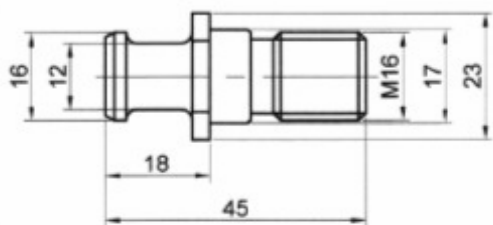
Ref. 535-016	CORREA TYPE
Order Nr.	Price
PS.CORREA-M24	



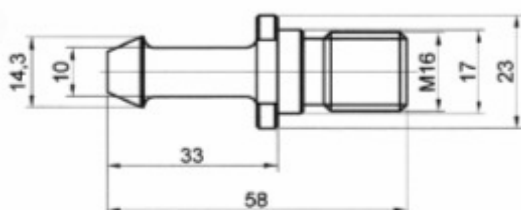
Ref. 535-019	CORTINI TYPE
Order Nr.	Price
PS.MECC.CORTINI-M12	



Ref. 535-022	FAMUP TYPE							
Order Nr.	M	D	D1	D3	D4	L	L1	Price
PS.FAMUP-M12	M12	16	13	9,80	5,8	40	20	
PS.FAMUP-M16	M16	23	17	13,80	9,8	55	27	
PS.FAMUP-M16-1	M16	23	17	13,80	9,8	58	30	



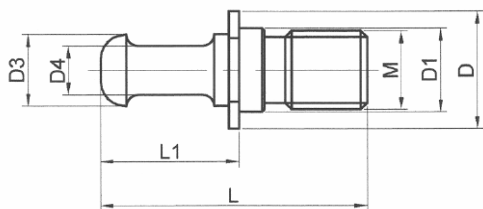
Ref. 535-025	GLORIA/TRAUB TYPE
Order Nr.	Price
PS.GLORIA/TRAUB-M16	



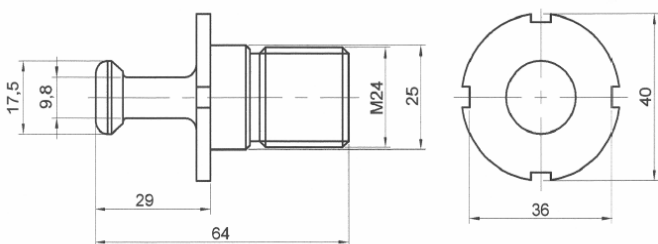
Ref. 535-028	OLIVETTI TYPE
Order Nr.	Price
PS.OLIVETTI-M16	

24 Codoli di aggancio (Tiranti)

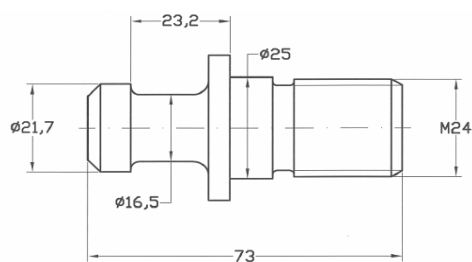
TIRANTI - PULL STUDS - ANZUGSBOLZEN - TIRETTES



Ref. 535-031		RAMBAUDI TYPE							
Order Nr.	M	D	D1	D3	D4	L	L1	Price	
PS.RAMBAUDI-M16	M16	24	17	14,6	10	52	30		
PS.RAMBAUDI-M24	M24	36	25	20	16	79,5	39,5		



Ref. 535-034		SECMU TYPE		
Order Nr.				Price
PS.SECMU-M24				



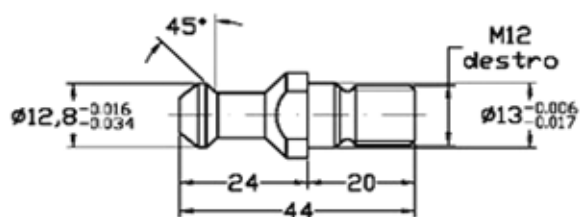
Ref. 535-037		TIGER TYPE	
Order Nr.			Price
PS.TIGER-M24			

24 Codoli di aggancio (Tiranti)

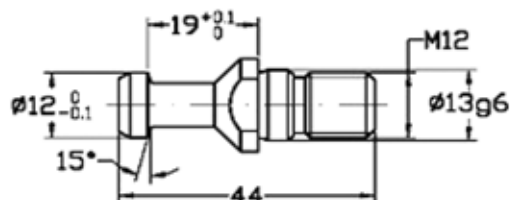
CAPORALI



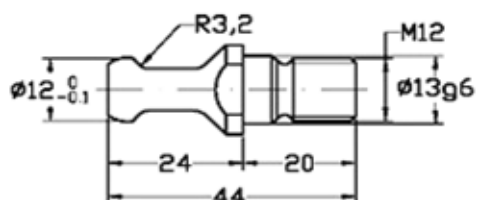
TIRANTI - PULL STUDS - ANZUGSBOLZEN - TIRETTES



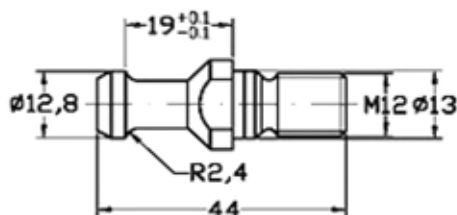
Ref. 535-045	ALBERTI TYPE	
Order Nr.	☹	Price
PS.WD30-ALB		



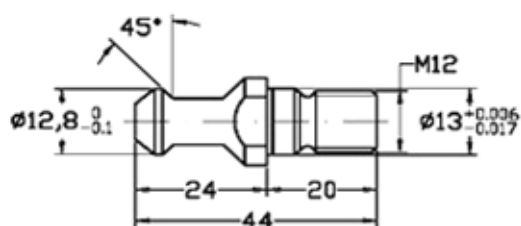
Ref. 535-048	BIESSE TYPE	
Order Nr.	☹	Price
PS.WD30-BS1		



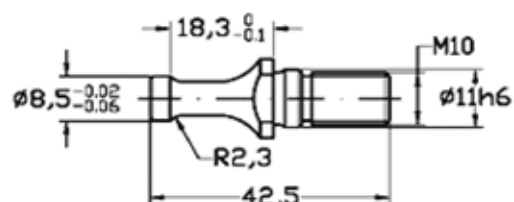
Ref. 535-051	BIESSE TYPE	
Order Nr.	☹	Price
PS.WD30-BS2		



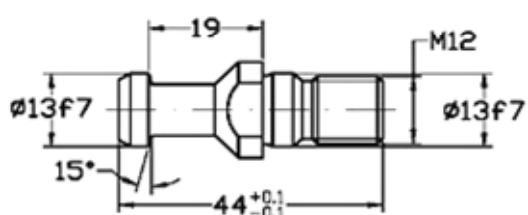
Ref. 535-054	C M S TYPE	
Order Nr.	☹	Price
PS.WD30-CMS		



Ref. 535-057	G. COLOMBO TYPE	
Order Nr.	☹	Price
PS.WD30-COL		



Ref. 535-060	S C M TYPE	
Order Nr.	☹	Price
PS.WD30-SCM		



Ref. 500-002	DIN 69872	
Order Nr.	☹	Price
PS.DIN30SF		



Adatti per macchine per la lavorazione del legno
Suitable for woodworking machine chucks

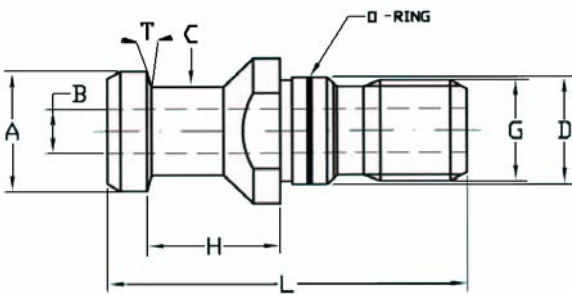


Ordine minimo: 10 pezzi per tipo
Min. order 10 pcs. each type

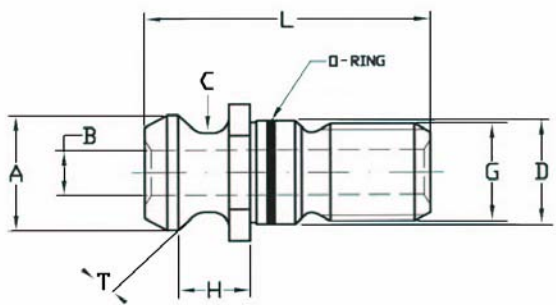
**RICHIESTA DI CODOLI SPECIALI
RETENTION KNOB REQUEST SHEET**

Se il TIRANTE richiesto non si trova nelle pagine precedenti, preghiamo di completare ed inviarci uno degli schizzi riportati

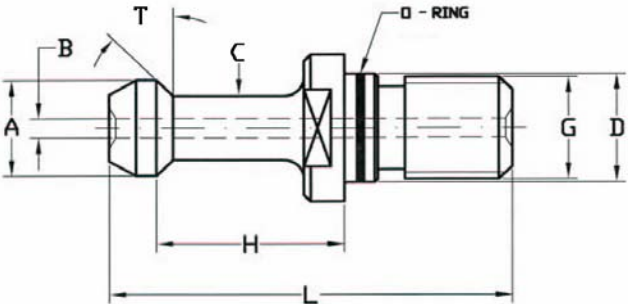
If required KNOB is not shown in the previous pages, please select the most similar design and specify dimensions.



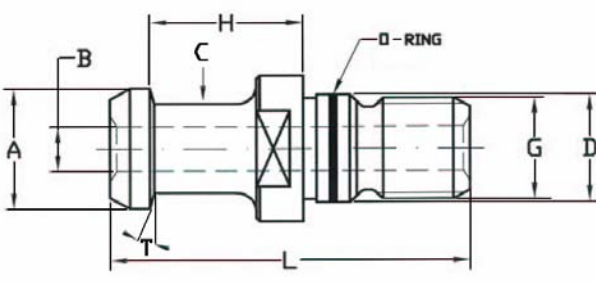
G = **A =**
D = **T =**
L = **C =**
H = **B =**
MACHINE TYPE



G = **A =**
D = **T =**
L = **C =**
H = **B =**
MACHINE TYPE



G = **A =**
D = **T =**
L = **C =**
H = **B =**
MACHINE TYPE



G = **A =**
D = **T =**
L = **C =**
H = **B =**
MACHINE TYPE

CLIENTE - COSTUMER