



Portapinze  
Collet chucks  
Spannzangenhalter  
Mandrins à pinces

**SK / WD 30 - 40**

**ERC Collets**

Pag. - Seite

1 ÷ 2



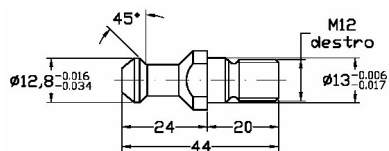
Portapinze  
Collet chucks  
Spannzangenhalter  
Mandrins à pinces

**SK / WD 30 - 40**

**EOC Collets**

Pag. - Seite

2



Tiranti  
Pull Studs  
Anzugsbolzen  
Tirettes

Pag. - Seite

3



Portapinze  
Collet chucks  
Spannzangenhalter  
Mandrins à pinces

**HSK 63 - Form E - F**

**ERC Collets**

Pag. - Seite

4 ÷ 5



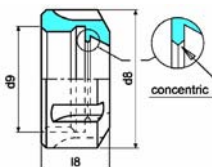
Portapinze  
Collet chucks  
Spannzangenhalter  
Mandrins à pinces

**Morse Taper**

**ERC 32**

Pag. - Seite

6



Ghiere chiudipinza con estrazione concentrica  
Clamping nuts with concentric ring extractor  
Spannmuttern mit Konzenterring  
Écroux avec bague d'extraction symétrique

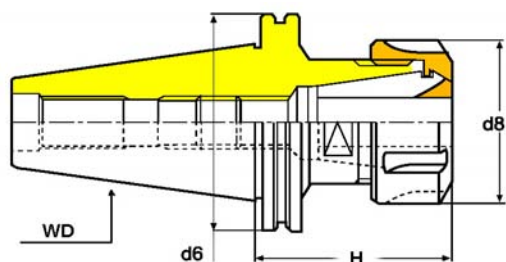
Pag. - Seite

7

Portapinzine  
Collet chucks  
Spannzangenhalter  
Mandrins à pinces

**PROGETTATO PER  
LAVORAZIONI AD  
ALTA VELOCITÀ**

ERC / DIN 6499 Collets



Ref.	Order Nr.	d6	d8	Capacità Range	Price	Machine Reference
<b>SHANKS WD 30 - 40 / DIN 69871</b>						
316-020	WD30.H50.ERC32RH	50	50	3 ÷ 20		BIESSE • COSMEC • MASTERWOOD •
	WD30.H50.ERC32LH	50	50	3 ÷ 20		
	WD30.H57.ERC40RH	50	63	4 ÷ 30		
	WD30.H57.ERC40LH	50	63	4 ÷ 30		
	WD30.H57.ERC32RH	50	50	3 ÷ 20		BUSELLATO • SCM • FOM • G. COLOMBO
	WD30.H57.ERC32RHY ♦	50	50	3 ÷ 20		
♦ <b>Trattamento NYPLOI</b>						
	WD30.H68.ERC32RH	50	50	3 ÷ 20		• BIESSE • SCM • • MORBIDELLI • • ELMA • DUBUS • • WEEKE •
	WD30.H68.ERC32LH	50	50	3 ÷ 20		
	WD30.H68.ERC40RH	50	63	4 ÷ 30		
	WD30.H68.ERC40LH	50	63	4 ÷ 30		
	WD40.H68.ERC32RH	63,55	50	3 ÷ 20		• SCM • BULLERI • • IMA • WEEKE • • MAKA • • STEGHERR • • REICHENBAKER •
	WD40.H68.ERC32LH	63,55	50	3 ÷ 20		
	WD40.H68.ERC40RH	63,55	63	4 ÷ 30		
	WD40.H68.ERC40LH	63,55	63	4 ÷ 30		
<b>SHANKS WD 30 C - ISO 7388</b>						
	WD30C.H60.ERC32RH	46	50	3 ÷ 20		CMS
	WD30C.H60.ERC32LH	46	50	3 ÷ 20		
	WD30C.H65.ERC40RH	46	63	4 ÷ 30		
	WD30C.H65.ERC40LH	46	63	4 ÷ 30		

RH = Mandrini con rotazione destra - Chucks with Right Hand revolution  
LH = Mandrini con rotazione sinistra - Chucks with Left Hand revolution

### CARATTERISTICHE

- I mandrini WD non hanno le tacche di trascinamento sulla flangia a "V", pertanto, la loro simmetria consente lavorazioni ad alte velocità.
- **ATTENZIONE: PER VELOCITÀ SUPERIORI A 15.000 g/min. E' NECESSARIO BILANCIARE IL MANDRINO CON L'UTENSILE MONTATO.**
- Forniti con ghiera concentriche, vedi pag. 16.7

### FEATURES:

- The chucks WD are supplied without the milled slots on the "V" flange. The symmetry of the chuck allow high speed operations.
- **WARNING: FOR SPEEDS MORE THAN 15.000 rpm. THE CHUCK MUST BE FINE BALANCED TOGETHER THE CUTTING TOOL**
- Supplied with concentric clamping nuts, see pag. 16.7

Portapinze  
Collet chucks  
Spannzangenhalter  
Mandrins à pinces

**PROGETTATO PER  
LAVORAZIONI AD  
ALTA VELOCITÀ**

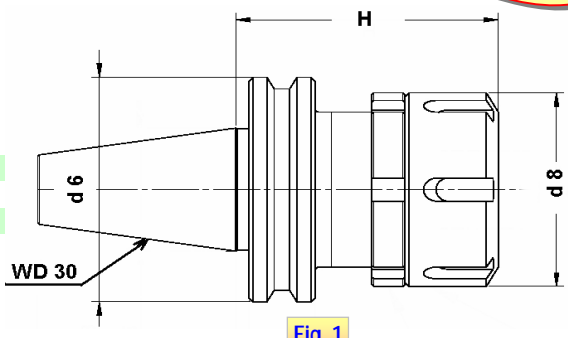


Fig. 1

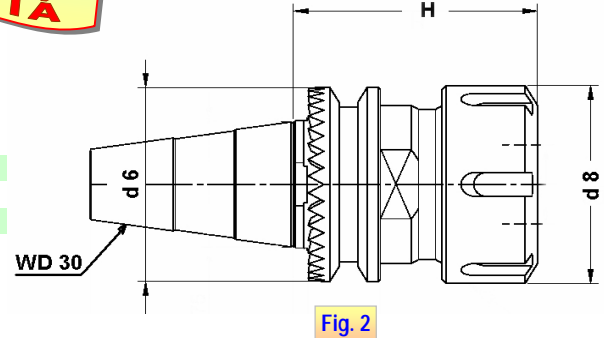


Fig. 2

## ERC / DIN 6499 Collets

Ref.	Order Nr.	Fig.	d6	d8	Capacità Range	Price	Machine Reference
316-023	WD30U.H63.ERC32RH	1	58	50	3 ÷ 20		<ul style="list-style-type: none"> <li>• UNITEAM •</li> <li>• ESSETEAM •</li> <li>• TEK TEAM •</li> </ul>
	WD30U.H63.ERC32LH	1	58	50	3 ÷ 20		
	WD30U.H65.ERC40RH	1	58	63	4 ÷ 30		
	WD30U.H65.ERC40LH	1	58	63	4 ÷ 30		
	WD30S.H55.ERC32RH	2	49	50	3 ÷ 20		<ul style="list-style-type: none"> <li>• SCM •</li> <li>• MORBIDELLI •</li> </ul>
	WD30S.H55.ERC32LH	2	49	50	3 ÷ 20		
	WD30S.H74.ERC40RH	2	49	63	4 ÷ 30		
	WD30S.H74.ERC40LH	2	49	63	4 ÷ 30		



Fig. 1



Fig. 2

## EOC / DIN 6388 Collets

• GHIERE CHIUDIPINZA SENZA SFERE - COLLET NUTS WITHOUT BALLS

Ref.	Order Nr.	Fig.	d6	d8	Capacità Range	Price	Machine Reference
316-023	WD30.H70.EOC25RH	1	50	60	2 ÷ 25		<ul style="list-style-type: none"> <li>BIESSE • SCM • ELMA • DUBUS •</li> <li>MORBIDELLI • WEEKE</li> </ul>
	WD30.H70.EOC25LH	1	50	60	2 ÷ 25		
	WD40.H74.EOC25RH	1	63,55	60	2 ÷ 25		<ul style="list-style-type: none"> <li>SCM • BULLERI • IMA • WEEKE •</li> <li>MAKA • STECHERR • REICHENBAKER</li> </ul>
	WD40.H74.EOC25LH	1	63,55	60	2 ÷ 25		
	WD30U.H70.EOC25RH	2	58	60	2 ÷ 25		<ul style="list-style-type: none"> <li>UNITEAM • ESSETEAM •</li> <li>TEKTEAM</li> </ul>
	WD30U.H70.EOC25LH	2	58	60	2 ÷ 25		
	WD30S.H70.EOC25RH	2	49	60	2 ÷ 25		<ul style="list-style-type: none"> <li>SCM • MORBIDELLI</li> </ul>
	WD30S.H70.EOC25LH	2	49	60	2 ÷ 25		

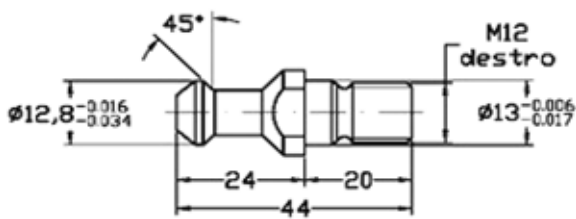
RH = Mandrini con rotazione destra - Chucks with Right Hand revolution  
LH = Mandrini con rotazione sinistra - Chucks with Left Hand revolution

# 16 Codoli di aggancio (Tiranti)

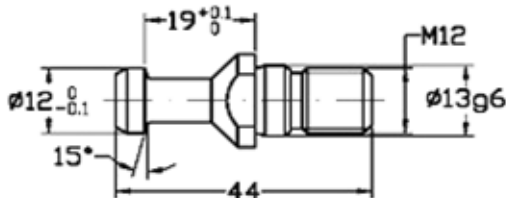
CAPORALI



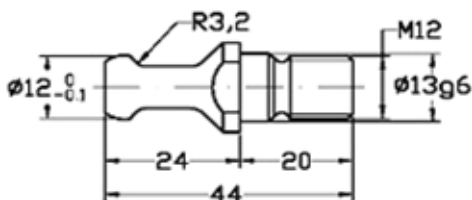
TIRANTI - PULL STUDS - ANZUGSBOLZEN - TIRETTES



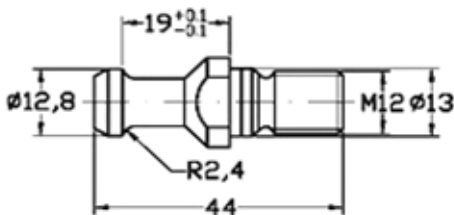
Ref. 535-045	ALBERTI TYPE	
Order Nr.	☹️	Price
PS.WD30-ALB		



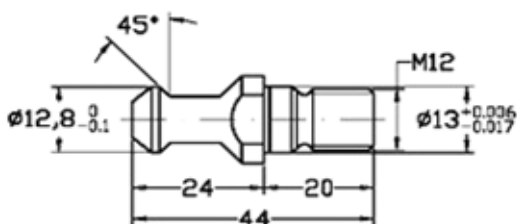
Ref. 535-048	BIESSE TYPE	
Order Nr.	☹️	Price
PS.WD30-BS1		



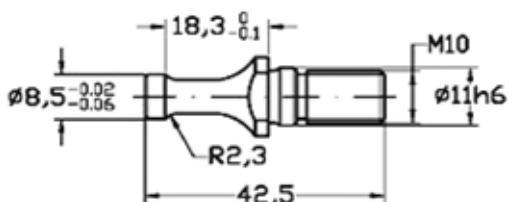
Ref. 535-051	BIESSE TYPE	
Order Nr.	☹️	Price
PS.WD30-BS2		



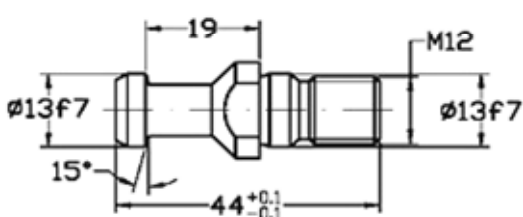
Ref. 535-054	C M S TYPE	
Order Nr.	☹️	Price
PS.WD30-CMS		



Ref. 535-057	G. COLOMBO TYPE	
Order Nr.	☹️	Price
PS.WD30-COL		



Ref. 535-060	S C M TYPE	
Order Nr.	☹️	Price
PS.WD30-SCM		



Ref. 500-002	DIN 69872	
Order Nr.	☹️	Price
PS.DIN30SF		



Adatti per macchine per la lavorazione del legno  
Suitable for woodworking machine chucks



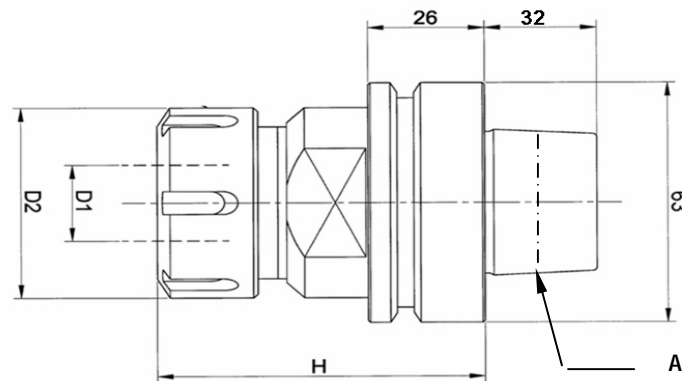
Ordine minimo: 10 pezzi per tipo  
Min. order 10 pcs. each type

# 16 WOOD Machines collet chucks

CAPORALI

Portapinze  
Collet chucks  
Spannzangenhalter  
Mandrins à pinces

**PROGETTATO PER  
LAVORAZIONI AD  
ALTA VELOCITÀ**



Attacco - Shank: HSK 63 E - DIN 69893 - 5

Ref.	Order Nr.	A	Pinze Collets	D1	D2	Price
<b>ERC Collets DIN 6499 / B</b>						
316-050	HSK63EWD.H78.ERC32RH	48	ERC32	2 ÷ 20	50	
	HSK63EWD.H78.ERC32LH	48	ERC32	2 ÷ 20	50	
	HSK63EWD.H75.ERC40RH	48	ERC40	3 ÷ 30	63	
	HSK63EWD.H75.ERC40LH	48	ERC40	3 ÷ 30	63	
<b>EOC Collets DIN 6388 - Nuts without balls</b>						
	HSK63EWD.H80.EOC25RH	48	EOC25	2 ÷ 25	60	
	HSK63EWD.H80.EOC25LH	48	EOC25	2 ÷ 25	60	

**RH = Mandrini con rotazione destra - Chucks with Right Hand revolution**

**LH = Mandrini con rotazione sinistra - Chucks with Left Hand revolution**



# 16 WOOD Machines collet chucks

CAPORALI

Portapinze  
Collet chucks  
Spannzangenhalter  
Mandrins à pinces

**PROGETTATO PER  
LAVORAZIONI AD  
ALTA VELOCITÀ**

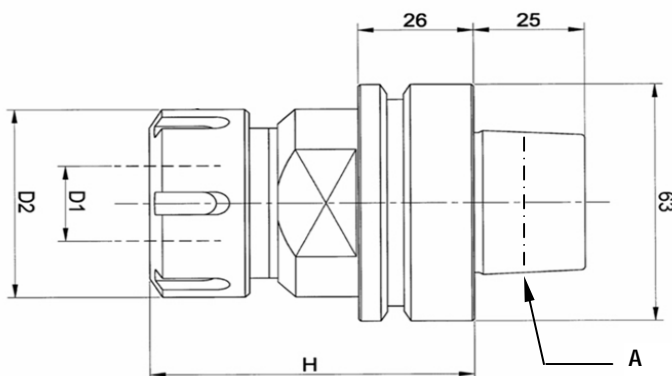
Attacco - Shank: HSK 63 F DIN 69893 - 6



Foto 1



Foto 2



Ref.	Order Nr.	A	Pinze Collets	Foto	D1	D2	Price
<b>ERC Collets DIN 6499 / B</b>							
316-056	HSK63FWD.H73.ERC32RH	38	ERC32	1	2 + 20	50	
	HSK63FWD.H80.ERC40RH	38	ERC40	1	3 + 30	63	
	HSK63FWD.H73.ERC32LH	38	ERC32	1	2 + 20	50	
	HSK63FWD.H80.ERC40LH	38	ERC40	1	3 + 30	63	
<b>ERCD Collets DIN 6499 Compatible</b>							
	HSK63FWD.H73.ERCD32RH	38	ERCD32	2	3 + 20	50	
	HSK63FWD.H73.ERCD40RH	38	ERCD40	2	4 + 26	63	
<b>EOC Collets DIN 6388 - Nuts without balls</b>							
	HSK63EWD.H80.EOC25RH	38	EOC25	—	2 + 25	60	
	HSK63EWD.H80.EOC25LH	38	EOC25	—	2 + 25	60	

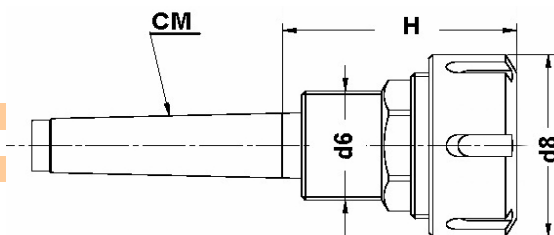
RH = Mandrini con rotazione destra - Chucks with Right Hand revolution  
LH = Mandrini con rotazione sinistra - Chucks with Left Hand revolution

# 16 WOOD Machines collet chucks

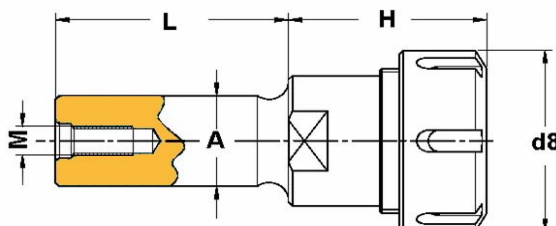
CAPORALI

Portapinze  
Collet chucks  
Spannzangenhalter  
Mandrins à pinces

**PROGETTATO PER  
LAVORAZIONI AD  
ALTA VELOCITÀ**



Ref.	Order Nr.	d6	d8	Capacità Range	Price
<b>ERC / DIN 6499 Collets</b>					
316-070	WCM2.H62.ERC32RH	M 30 x 1,5	50	3 ÷ 20	
	WCM2.H62.ERC32LH	M 30 x 1,5	50	3÷ 20	



Ref.	Order Nr.	H	d8	M	Capacità Range	Price
<b>ERC / DIN 6499 Collets</b>						
316-073	D20W.L60.ERC32RH	50	50	M8	3 ÷ 20	
	D20W.L60.ERC32LH	50	50	M8	3 ÷ 20	
	D20W.L60.ERC40RH	64	63	M8	4 ÷ 30	
	D20W.L60.ERC40LH	64	63	M8	4 ÷ 30	
	D25W.L60.ERC32RH	50	50	M8	3 ÷ 20	
	D25W.L60.ERC32LH	50	50	M8	3 ÷ 20	
	D25W.L60.ERC40RH	64	63	M8	4 ÷ 30	
	D25W.L60.ERC40LH	64	63	M8	4 ÷ 30	

**RH = Mandrini con rotazione destra - Chucks with Right Hand revolution**  
**LH = Mandrini con rotazione sinistra - Chucks with Left Hand revolution**

# 16 CONCENTRIC Clamping Nuts



CAPORALI

Ghiere chiudipinza, per alte velocità, con estrazione concentrica  
*Clamping nuts with concentric ring extractor for high speeds*  
 Spannmuttern mit Konzenterring für erhöhte Drehzahlen  
*Ecroux avec bague d'extraction symétrique pour haute vitesse*

**PREBALANCED  
 GRADE G 6,3**

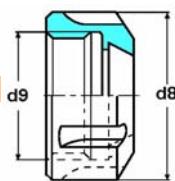


Fig. 1

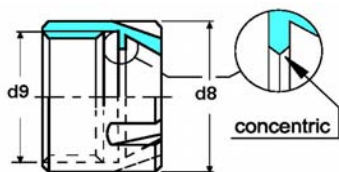


Fig. 2

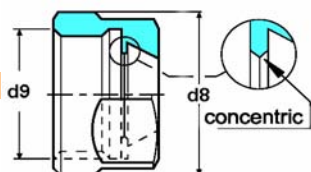


Fig. 3

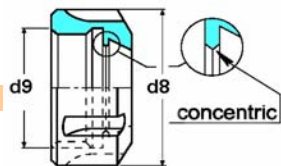


Fig. 4

Ref.	Order	Fig.	d8	d9	max rpm	Price
<b>SUPER VERSION - Sliding bearing</b>						
130-021	G25 SPC	1	42	M32 x 1,5	20.000	
	G32 SPC	1	50	M40 x 1,5	20.000	
<b>MINI VERSION Filettatura destra RH thread</b>						
130-033	G16 WDM	2	22	M19 x 1	20.000	
	G20 WDM	2	28	M24 x 1	15.000	
	G25 WDM	2	35	M30 x 1	15.000	
<b>MINI VERSION Filettatura sinistra LH thread</b>						
130-034	G16 WDML	2	22	M19 x 1 sin	20.000	
	G20 WDML	2	28	M24 x 1 sin	15.000	
	G25 WDML	2	35	M30 x 1 sin	15.000	
<b>EXAGONAL VERSION</b>						
130-043	G16 WDE	3	28	M22 x 1,5	15.000	
	G20 WDE	3	34	M25 x 1,5	15.000	
<b>STANDARD VERSION Filettatura destra RH thread</b>						
130-053	G20 WD	4	35	M25 x 1,5	15.000	
	G25 WD	4	42	M32 x 1,5	15.000	
	G32 WD	4	50	M40 x 1,5	15.000	
	G40 WD	4	63	M50 x 1,5	12.000	
<b>STANDARD VERSION Filettatura sinistra LH thread</b>						
130-054	G20 WDL	4	35	M25 x 1,5 sin	15.000	
	G25 WDL	4	42	M32 x 1,5 sin	15.000	
	G32 WDL	4	50	M40 x 1,5 sin	15.000	
	G40 WDL	4	63	M50 x 1,5 sin	12.000	

Chiavi  
 Spanners  
 Spansschüssel  
 Clés



**SUPER - STANDARD**  
 See - pag. 1.35



**MINI**  
 See - pag. 1.33



**EXAGON**  
 See - pag. 1.34



Sono fornite di serie con i portapinze per la lavorazione del legno  
 Are supplied with the collet chucks for woodworking machines